



2021 Regional Girls Team

Yellow Brick Road Modified



Oil Pattern Distance: 39 Feet	Reverse Brush Drop: 30 Feet	Oil Per Board: 50 uL
Forward Oil Total: 16.7 mL	Reverse Oil Total: 6 mL	Volume Oil Total: 22.7 mL
Forward Boards Crossed: 334 Boards	Reverse Boards Crossed: 120 Boards	Total Boards Crossed: 454 Boards

	Start	Stop	Loads	Speed	Crossed	Start	End	Feet	T.Oil
1	2L	2R	3	14	111	0.0	3.9	3.9	5550
2	8L	8R	1	14	25	3.9	5.8	1.9	1250
3	9L	9R	1	14	23	5.8	7.7	1.9	1150
4	10L	10R	2	14	42	7.7	11.6	3.9	2100
5	10L	10R	2	18	42	11.6	16.7	5.1	2100
6	11L	11R	3	18	57	16.7	24.3	7.6	2850
7	12L	12R	2	18	34	24.3	29.4	5.1	1700
8	2L	2R	0	18	0	29.4	34.0	4.6	0
9	2L	2R	0	22	0	34.0	39.0	5.0	0

⏪ ⏩ ⏴ ⏵ Forward Reverse More

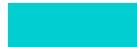
	Start	Stop	Loads	Speed	Crossed	Start	End	Feet	T.Oil
1	2L	2R	0	26	0	39.0	24.0	-15.0	0
2	12L	12R	1	22	17	24.0	20.9	-3.1	850
3	11L	11R	2	18	38	20.9	15.8	-5.1	1900
4	10L	10R	2	18	42	15.8	10.7	-5.1	2100
5	9L	9R	1	14	23	10.7	8.8	-1.9	1150
6	2L	2R	0	14	0	8.8	0.0	-8.8	0

⏪ ⏩ ⏴ ⏵ Forward Reverse More

Conditioner:
Type In or Select One

TransferType:
Transfer Brush

Forward



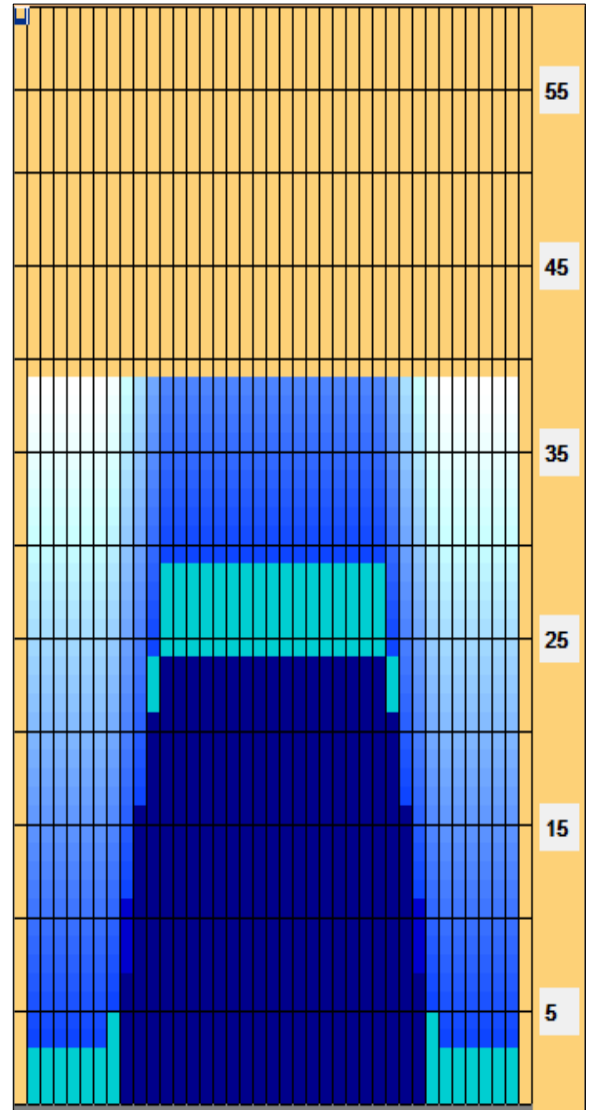
Reverse



Combined



Buff



Modified YBR

Item	3L-7L:18L-18R	8L-12L:18L-18R	13L-17L:18L-18R	18L-18R:17R-13R	18L-18R:12R-8R	18L-18R:7R-3R
Description	Outside Track:Middle	Middle Track:Middle	Inside Track:Middle	Middle: Inside Track	Middle:Middle Track	Middle:Outside Track
Track Zone Ratio	6.67	1.69	1	1	1.69	6.67

