



2014 PA STATE CHAMPIONSHIPS

Singles Event (Friday, March 14th)

Modified 2010 Istanbul Open



Oil Pattern Distance:	37 Feet	Reverse Brush Drop:	37 Feet	Oil Per Board:	50 uL
Forward Oil Total:	10.85 mL	Reverse Oil Total:	12.7 mL	Volume Oil Total:	23.55 mL
Forward Boards Crossed:	217 Boards	Reverse Boards Crossed:	254 Boards	Total Boards Crossed:	471 Boards

	Start	Stop	Loads	Speed	Crossed	Start	End	Feet	T.Oil
1	2L	2R	1	18	37	0.0	0.0	0.0	1850
2	5L	5R	1	18	31	0.0	2.5	2.5	1550
3	7L	7R	1	18	27	2.5	5.0	2.5	1350
4	9L	9R	3	18	69	5.0	12.6	7.6	3450
5	11L	11R	2	18	38	12.6	17.7	5.1	1900
6	13L	13R	1	18	15	17.7	20.2	2.5	750
7	2L	2R	0	18	0	20.2	28.0	7.8	0
8	2L	2R	0	22	0	28.0	34.0	6.0	0
9	2L	2R	0	26	0	34.0	37.0	3.0	0

Start-stops brought in.

Forward Reverse More

	Start	Stop	Loads	Speed	Crossed	Start	End	Feet	T.Oil
1	2L	2R	0	26	0	37.0	30.0	-7.0	0
2	12L	12R	1	18	17	30.0	27.5	-2.5	850
3	10L	10R	3	18	63	27.5	19.9	-7.6	3150
4	8L	8R	3	18	75	19.9	12.3	-7.6	3750
5	6L	6R	1	18	29	12.3	9.8	-2.5	1450
6	4L	4R	1	14	33	9.8	7.9	-1.9	1650
7	2L	2R	1	14	37	7.9	6.0	-1.9	1850
8	2L	2R	0	14	0	6.0	0.0	-6.0	0

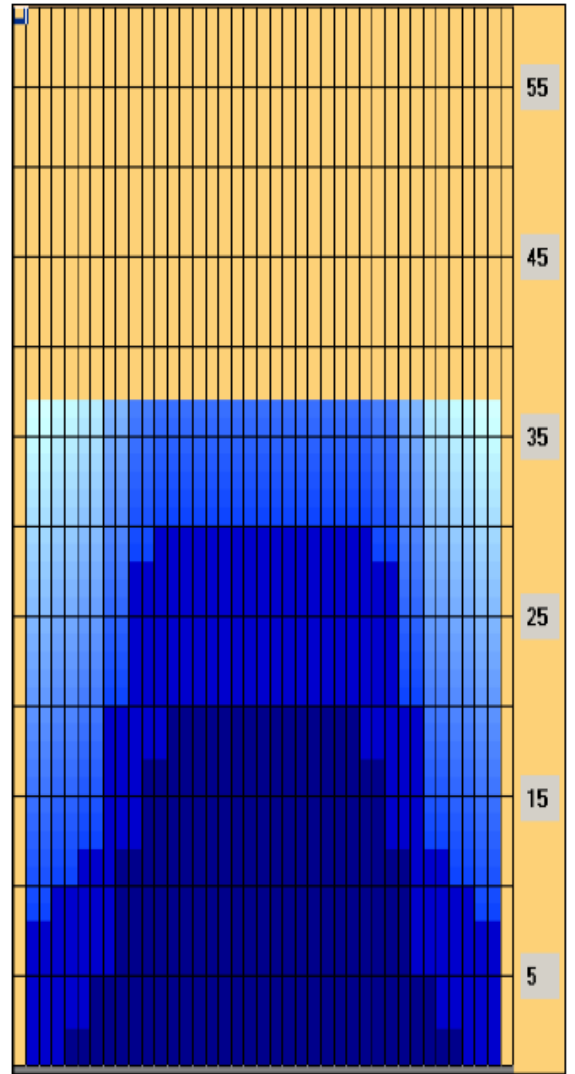
Start-stops brought in.

Forward Reverse More

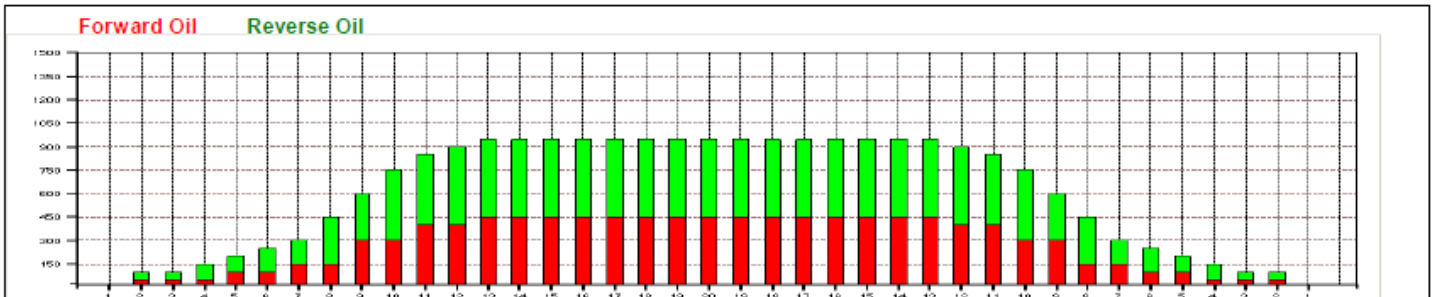
Conditioner:
Type In or Select One

TransferType:
Type In or Select One

- Forward
- Reverse
- Combined
- Buff



Item	3L-7L:18L-18R	8L-12L:18L-18R	13L-17L:18L-18R	18L-18R:17R-13R	18L-18R:12R-8R	18L-18R:7R-3R
Description	Outside Track:Middle	Middle Track:Middle	Inside Track:Middle	Middle: Inside Track	Middle:Middle Track	Middle:Outside Track
Track Zone Ratio	4.75	1.34	1	1	1.34	4.75



2010 EBT 08 - Istanbul Open (2037)



Oil Pattern Distance: 37 Feet
Forward Oil Total: 13.75 mL
Forward Boards Crossed: 275 Boards
Reverse Oil Total: 13.35 mL
Reverse Boards Crossed: 267 Boards
Oil Per Board: 50 uL
Volume Oil Total: 27.1 mL
Total Boards Crossed: 542 Boards

	Start	Stop	Loads	Speed	Crossed	Start	End	Feet	T.Oil
1	2L	2R	2	14	74	0.0	1.9	1.9	3700
2	5L	5R	2	14	62	1.9	5.8	3.9	3100
3	6L	6R	2	18	58	5.8	10.9	5.1	2900
4	7L	7R	3	18	81	10.9	18.5	7.6	4050
5	2L	2R	0	18	0	18.5	26.0	7.5	0
6	2L	2R	0	26	0	26.0	37.0	11.0	0

Conditioner:
Navigate

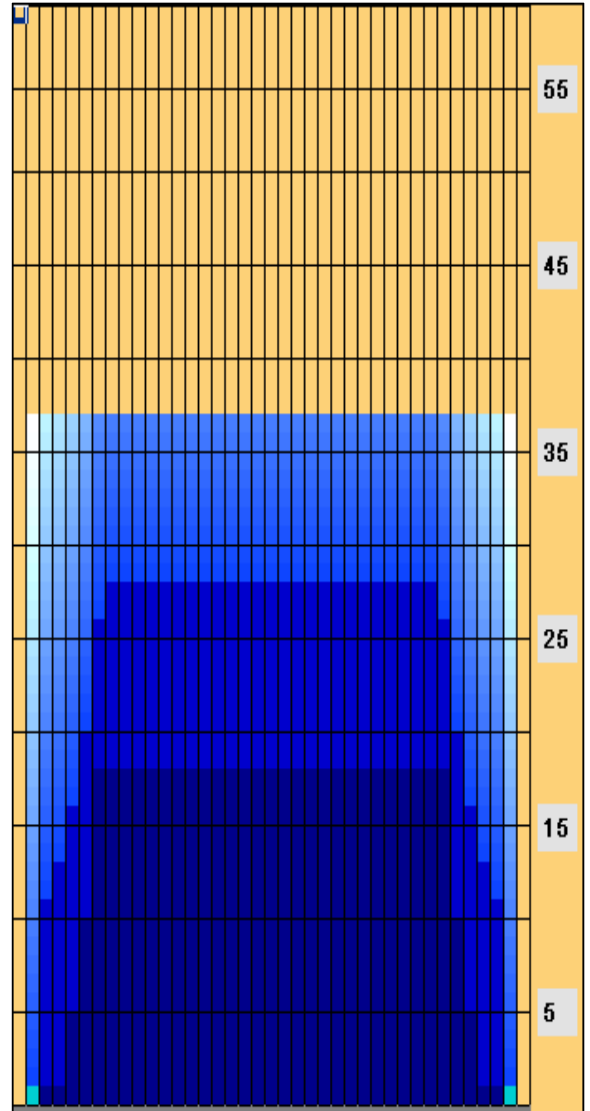
TransferType:
Transfer Brush

Forward

Reverse

Combined

Buff



	Start	Stop	Loads	Speed	Crossed	Start	End	Feet	T.Oil
1	2L	2R	0	30	0	37.0	28.0	-9.0	0
2	8L	8R	1	18	25	28.0	25.5	-2.5	1250
3	7L	7R	2	18	54	25.5	20.4	-5.1	2700
4	6L	6R	2	14	58	20.4	16.5	-3.9	2900
5	5L	5R	2	14	62	16.5	12.6	-3.9	3100
6	4L	4R	1	14	33	12.6	10.7	-1.9	1650
7	3L	3R	1	14	35	10.7	8.8	-1.9	1750
8	2L	2R	0	14	0	8.8	0.0	-8.8	0

Lane Surface: AMF SPL | Age: 3 years | Lane Cleaner: Fizzion

Item	3L-7L:18L-18R	8L-12L:18L-18R	13L-17L:18L-18R	18L-18R:17R-13R	18L-18R:12R-8R	18L-18R:7R-3R
Description	Outside Track:Middle	Middle Track:Middle	Inside Track:Middle	Middle: Inside Track	Middle:Middle Track	Middle:Outside Track
Track Zone Ratio	2.05	1	1	1	1	2.05

