

# Boys State Finals Lane Pattern



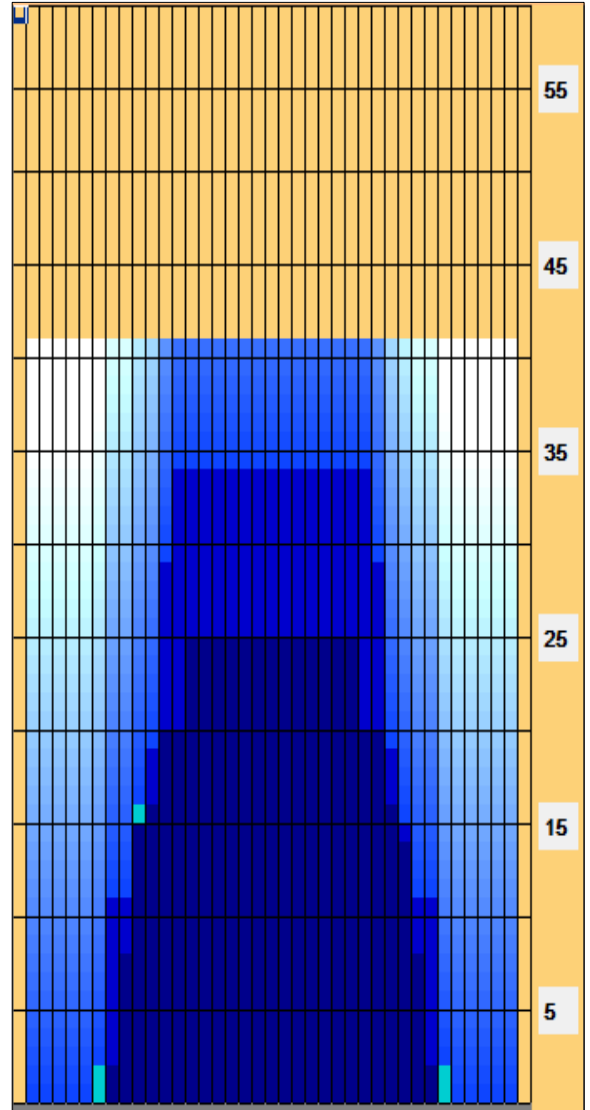
**Oil Pattern Distance:** 41 Feet      **Reverse Brush Drop:** 40 Feet      **Oil Per Board:** 50 uL  
**Forward Oil Total:** 15.15 mL      **Reverse Oil Total:** 10.15 mL      **Volume Oil Total:** 25.3 mL  
**Forward Boards Crossed:** 303 Boards      **Reverse Boards Crossed:** 203 Boards      **Total Boards Crossed:** 506 Boards

	Start	Stop	Loads	Speed	Crossed	Start	End	Feet	T.Oil
1	2L	2R	1	10	37	0.0	0.0	0.0	1850
2	7L	7R	2	10	54	0.0	2.8	2.8	2700
3	9L	9R	3	14	69	2.8	8.7	5.9	3450
4	10L	10R	3	14	63	8.7	14.6	5.9	3150
5	10L	11R	1	14	20	14.6	16.5	1.9	1000
6	12L	12R	2	14	34	16.5	20.4	3.9	1700
7	14L	14R	2	18	26	20.4	25.5	5.1	1300
8	15L	15R	0	18	0	25.5	27.0	1.5	0
9	15L	15R	0	22	0	27.0	32.0	5.0	0
10	2L	2R	0	26	0	32.0	41.0	9.0	0

	Start	Stop	Loads	Speed	Crossed	Start	End	Feet	T.Oil
1	2L	2R	0	26	0	41.0	34.0	-7.0	0
2	13L	13R	2	18	30	34.0	28.9	-5.1	1500
3	12L	12R	2	18	34	28.9	23.8	-5.1	1700
4	12L	12R	2	18	34	23.8	18.7	-5.1	1700
5	11L	11R	2	14	38	18.7	14.8	-3.9	1900
6	10L	10R	2	14	42	14.8	10.9	-3.9	2100
7	8L	8R	1	10	25	10.9	9.5	-1.4	1250
8	2L	2R	0	10	0	9.5	0.0	-9.5	0

Conditioner:  
 Type In or Select One  
 TransferType:  
 Type In or Select One

- Forward
- Reverse
- Combined
- Buff



Item	3L-7L:18L-18R	8L-12L:18L-18R	13L-17L:18L-18R	18L-18R:17R-13R	18L-18R:12R-8R	18L-18R:7R-3R
Description	Outside Track:Middle	Middle Track:Middle	Inside Track:Middle	Middle:Inside Track	Middle:Middle Track	Middle:Outside Track
Track Zone Ratio	17.86	2.08	1.02	1.02	2.12	17.86

