

# CB House 01092012



Oil Per Board: **45 uL**      Oil Pattern Distance: **41 Feet**      Volume Oil Total: **25.065 mL**      Total Boards Crossed: **557 Boards**

Forward Oil Total: **16.02 mL**      Reverse Oil Total: **9.045 mL**  
 Forward Boards Crossed: **356 Boards**      Reverse Boards Crossed: **201 Boards**

	Start	Stop	Loads	Speed	Crossed	Start	End	Feet	T.Oil
1	2L	2R	2	14	74	0.0	1.9	1.9	3330
2	8L	8R	2	14	50	1.9	5.8	3.9	2250
3	9L	9R	2	14	46	5.8	9.7	3.9	2070
4	10L	10R	3	18	63	9.7	17.3	7.6	2835
5	11L	11R	3	18	57	17.3	24.9	7.6	2565
6	12L	12R	3	22	51	24.9	34.2	9.3	2295
7	13L	13R	1	22	15	34.2	37.3	3.1	675
8	2L	2R	0	22	0	37.3	41.0	3.7	0

Navigation: << >> Forward Reverse More Info

	Start	Stop	Loads	Speed	Crossed	Start	End	Feet	T.Oil
1	2L	2R	0	30	0	41.0	33.0	-8.0	0
2	13L	13R	2	18	30	33.0	27.9	-5.1	1350
3	12L	12R	3	18	51	27.9	20.3	-7.6	2295
4	11L	11R	3	14	57	20.3	14.4	-5.9	2565
5	10L	10R	3	14	63	14.4	8.5	-5.9	2835
6	2L	2R	0	14	0	8.5	0.0	-8.5	0

Navigation: << >> Forward Reverse More Info

**Report Date**

1/9/2012

**Conditioner:**

Type In or Select One

**TransferType:**

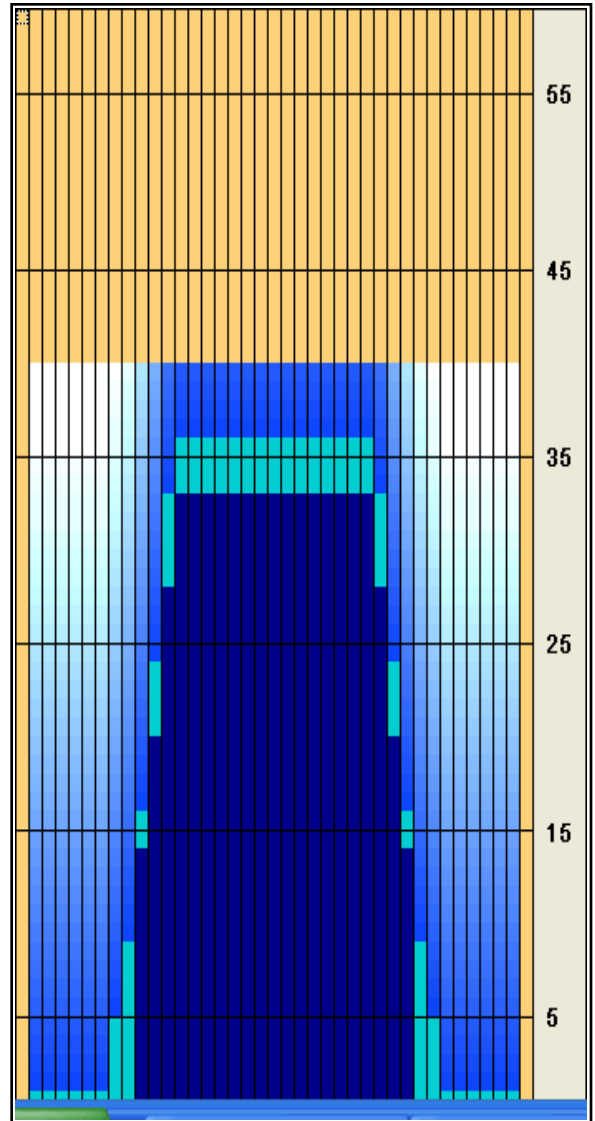
Type In or Select One

Forward Oil

Reverse Oil

Combined Oil

Buff Area



**Arrow Zone Ratios**

Item	2-6L:16L-20	6-10L:16-20	11-15L:16L-20	16L-20:20-16R	16L-20:20-16R	20-16R:15-11R	20-16R:10-6R	20-16R:5-2R
ul Arrow	90	234	1107	1215	1215	1107	234	90
Zone Ratio	13.5	5.19	1.1	1	1	1.1	5.19	13.5

**Track Zone Ratios**

Item	3L-7L:18L-18R	8L-12L:18L-18R	13L-17L:18L-18R	18L-18R:17R-13R	18L-18R:12R-8R	18L-18R:7R-3R
Description	Outside Track:Middle	Middle Track:Middle	Inside Track:Middle	Middle: Inside Track	Middle:Middle Track	Middle:Outside Track
Track Zone Ratio	13.5	2.11	1	1	2.11	13.5

