



Fort Duquesne

2019 Regionals (Team Event)



Oil Pattern Distance: **39 Feet**
 Forward Oil Total: **13.75 mL**
 Forward Boards Crossed: **275 Boards**

Reverse Brush Drop: **36 Feet**
 Reverse Oil Total: **11.8 mL**
 Reverse Boards Crossed: **236 Boards**

Oil Per Board: **50 uL**
 Volume Oil Total: **25.55 mL**
 Total Boards Crossed: **511 Boards**

	Start	Stop	Loads	Speed	Crossed	Start	End	Feet	T.Oil
1	2L	2R	3	14	111	0.0	3.9	3.9	5550
2	8L	8R	1	18	25	3.9	6.4	2.5	1250
3	9L	9R	1	18	23	6.4	8.9	2.5	1150
4	10L	10R	3	18	63	8.9	16.5	7.6	3150
5	11L	11R	1	18	19	16.5	19.0	2.5	950
6	12L	12R	2	22	34	19.0	25.2	6.2	1700
7	2L	2R	0	22	0	25.2	39.0	13.8	0

Conditioner:
Type In or Select One

TransferType:
Type In or Select One

Forward
Reverse
More

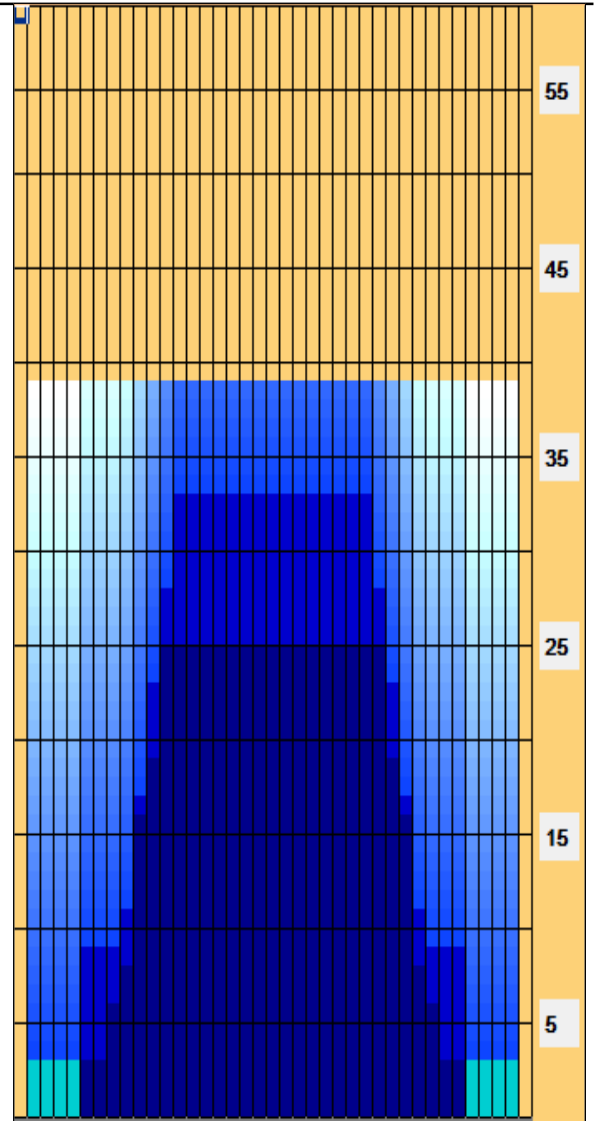
	Start	Stop	Loads	Speed	Crossed	Start	End	Feet	T.Oil
1	2L	2R	0	30	0	39.0	33.0	-6.0	0
2	13L	13R	2	18	30	33.0	27.9	-5.1	1500
3	12L	12R	2	18	34	27.9	22.8	-5.1	1700
4	11L	11R	3	14	57	22.8	16.9	-5.9	2850
5	10L	10R	3	14	63	16.9	11.0	-5.9	3150
6	9L	9R	1	14	23	11.0	9.1	-1.9	1150
7	6L	6R	1	14	29	9.1	7.2	-1.9	1450
8	2L	2R	0	10	0	7.2	0.0	-7.2	0

Forward
Reverse
More

Conditioner:
Type In or Select One

TransferType:
Type In or Select One

- Forward
- Reverse
- Combined
- Buff



2019 Eastern/Western PA Regional Championships (team event)

Item	3L-7L:18L-18R	8L-12L:18L-18R	13L-17L:18L-18R	18L-18R:17R-13R	18L-18R:12R-8R	18L-18R:7R-3R
Description	Outside Track:Middle	Middle Track:Middle	Inside Track:Middle	Middle: Inside Track	Middle:Middle Track	Middle:Outside Track
Track Zone Ratio	6.76	1.83	1	1	1.83	6.76

