



# 2015 Regional Team Kegel Main Street Modified



Oil Pattern Distance:	40 Feet	Reverse Brush Drop:	37 Feet	Oil Per Board:	50 uL
Forward Oil Total:	10.4 mL	Reverse Oil Total:	10.75 mL	Volume Oil Total:	21.15 mL
Forward Boards Crossed:	208 Boards	Reverse Boards Crossed:	215 Boards	Total Boards Crossed:	423 Boards

	Start	Stop	Loads	Speed	Crossed	Start	End	Feet	T.Oil
1	2L	2R	3	18	111	0.0	5.1	5.1	5550
2	8L	8R	1	18	25	5.1	7.6	2.5	1250
3	10L	10R	2	18	42	7.6	12.7	5.1	2100
4	13L	13R	2	18	30	12.7	17.8	5.1	1500
5	2L	2R	0	18	0	17.8	24.0	6.2	0
6	2L	2R	0	22	0	24.0	33.0	9.0	0
7	2L	2R	0	30	0	33.0	40.0	7.0	0

Forward Reverse More

	Start	Stop	Loads	Speed	Crossed	Start	End	Feet	T.Oil
1	2L	2R	0	30	0	40.0	34.0	-6.0	0
2	15L	15R	1	22	11	34.0	30.9	-3.1	550
3	14L	14R	2	18	26	30.9	25.8	-5.1	1300
4	13L	13R	4	18	60	25.8	15.6	-10.2	3000
5	11L	11R	4	14	76	15.6	7.7	-7.9	3800
6	10L	10R	2	10	42	7.7	4.9	-2.8	2100
7	2L	2R	0	10	0	4.9	0.0	-4.9	0

Forward Reverse More

Conditioner:  
Type In or Select  
One

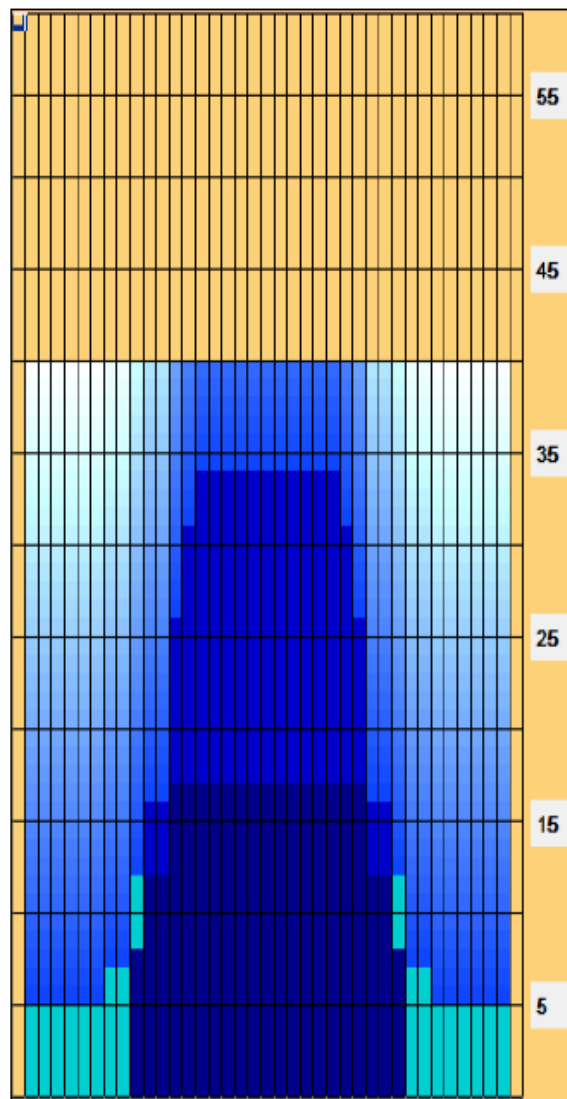
TransferType:  
Transfer Brush

Forward

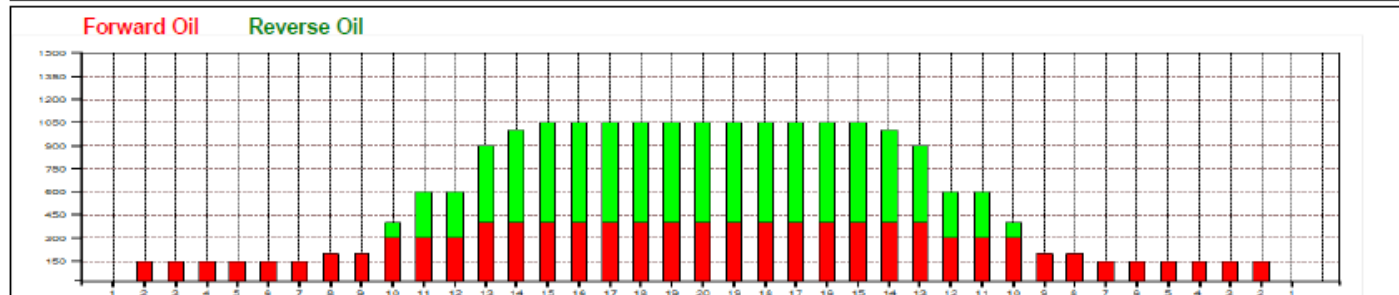
Reverse

Combined

Buff



Item	3L-7L:18L-18R	8L-12L:18L-18R	13L-17L:18L-18R	18L-18R:17R-13R	18L-18R:12R-8R	18L-18R:7R-3R
Description	Outside Track:Middle	Middle Track:Middle	Inside Track:Middle	Middle: Inside Track	Middle:Middle Track	Middle:Outside Track
Track Zone Ratio	7	2.63	1.04	1.04	2.63	7





# 2016 Regional Team Yellow Brick Road Modified



Oil Pattern Distance:	39 Feet	Reverse Brush Drop:	30 Feet	Oil Per Board:	50 uL
Forward Oil Total:	16.7 mL	Reverse Oil Total:	6 mL	Volume Oil Total:	22.7 mL
Forward Boards Crossed:	334 Boards	Reverse Boards Crossed:	120 Boards	Total Boards Crossed:	454 Boards

	Start	Stop	Loads	Speed	Crossed	Start	End	Feet	T.Oil
1	2L	2R	3	14	111	0.0	3.9	3.9	5550
2	8L	8R	1	14	25	3.9	5.8	1.9	1250
3	9L	9R	1	14	23	5.8	7.7	1.9	1150
4	10L	10R	2	14	42	7.7	11.6	3.9	2100
5	10L	10R	2	18	42	11.6	16.7	5.1	2100
6	11L	11R	3	18	57	16.7	24.3	7.6	2850
7	12L	12R	2	18	34	24.3	29.4	5.1	1700
8	2L	2R	0	18	0	29.4	34.0	4.6	0
9	2L	2R	0	22	0	34.0	39.0	5.0	0

Forward Reverse More

	Start	Stop	Loads	Speed	Crossed	Start	End	Feet	T.Oil
1	2L	2R	0	26	0	39.0	24.0	-15.0	0
2	12L	12R	1	22	17	24.0	20.9	-3.1	850
3	11L	11R	2	18	38	20.9	15.8	-5.1	1900
4	10L	10R	2	18	42	15.8	10.7	-5.1	2100
5	9L	9R	1	14	23	10.7	8.8	-1.9	1150
6	2L	2R	0	14	0	8.8	0.0	-8.8	0

Forward Reverse More

Conditioner:  
Type In or Select  
One

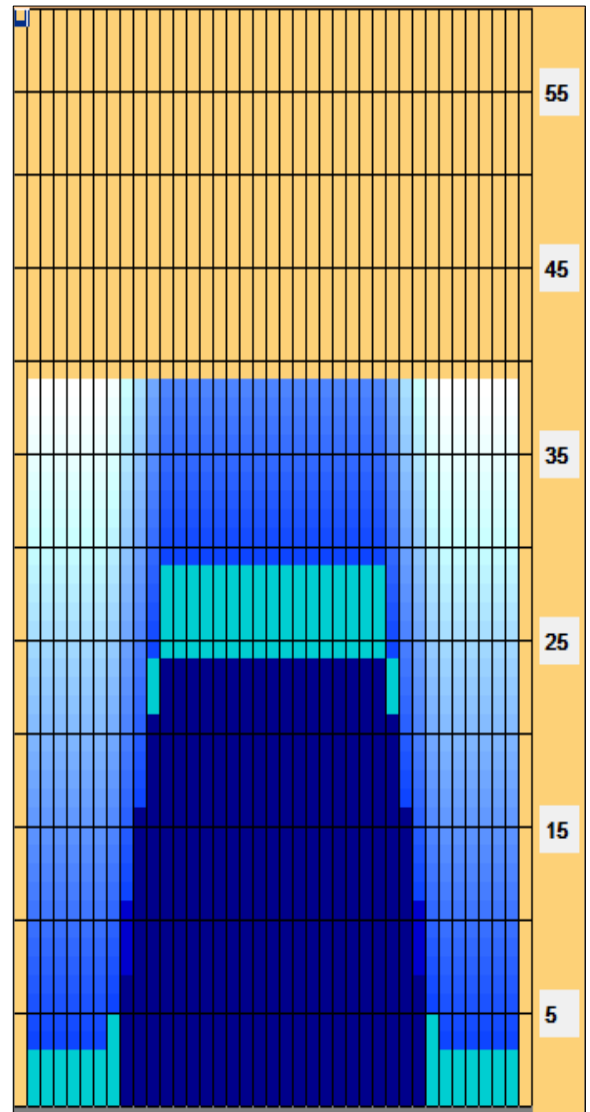
TransferType:  
Transfer Brush

Forward

Reverse

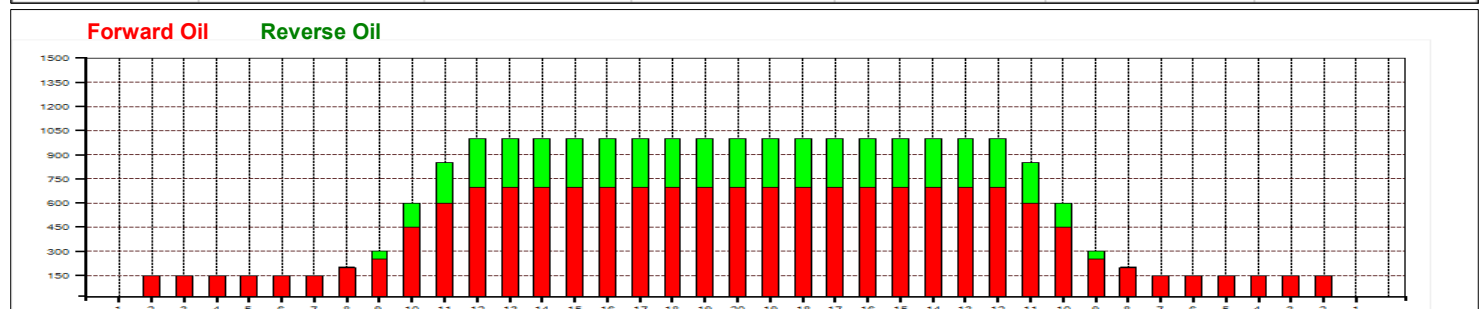
Combined

Buff



Modified YBR

Item	3L-7L:18L-18R	8L-12L:18L-18R	13L-17L:18L-18R	18L-18R:17R-13R	18L-18R:12R-8R	18L-18R:7R-3R
Description	Outside Track:Middle	Middle Track:Middle	Inside Track:Middle	Middle: Inside Track	Middle:Middle Track	Middle:Outside Track
Track Zone Ratio	6.67	1.69	1	1	1.69	6.67





# 2017 Regional Team

## Kegel Stonehenge Modified



Oil Pattern Distance:	40 Feet	Reverse Brush	36 Feet	Oil Per	50 uL
Forward Oil Total:	15.95 mL	Reverse Oil	7.8 mL	Volume Oil Total:	23.75 mL
Forward Boards Crossed:	319 Boards	Reverse Boards Crossed:	156 Boards	Total Boards Crossed:	475 Boards

	Start	Stop	Loads	Speed	Crossed	Start	End	Feet	T.Oil
1	2L	2R	3	18	111	0.0	5.1	5.1	5550
2	7L	7R	1	18	27	5.1	7.6	2.5	1350
3	9L	9R	2	18	46	7.6	12.7	5.1	2300
4	10L	10R	3	18	63	12.7	20.3	7.6	3150
5	11L	11R	2	18	38	20.3	25.4	5.1	1900
6	12L	12R	2	18	34	25.4	30.5	5.1	1700
7	2L	2R	0	22	0	30.5	36.0	5.5	0
8	2L	2R	0	30	0	36.0	40.0	4.0	0

Forward Reverse More

	Start	Stop	Loads	Speed	Crossed	Start	End	Feet	T.Oil
1	2L	2R	0	30	0	40.0	28.0	-12.0	0
2	12L	12R	2	18	34	28.0	22.9	-5.1	1700
3	11L	11R	2	18	38	22.9	17.8	-5.1	1900
4	10L	10R	4	18	84	17.8	7.6	-10.2	4200
5	2L	2R	0	14	0	7.6	0.0	-7.6	0

Forward Reverse More

Conditioner:  
Type In or Select  
One

TransferType:  
Type In or Select  
One

Forward



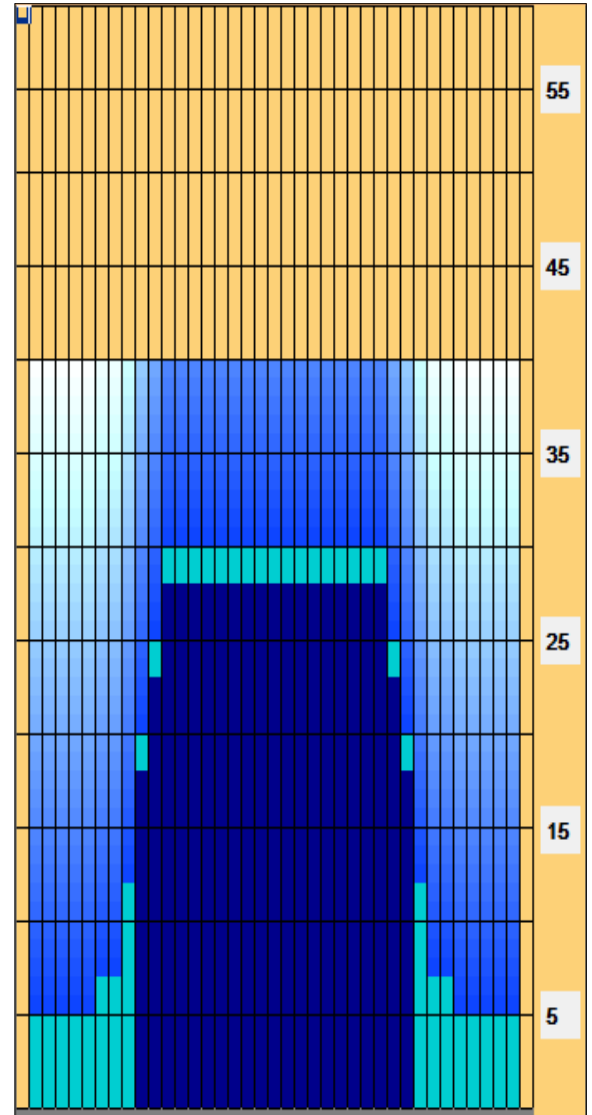
Reverse



Combined

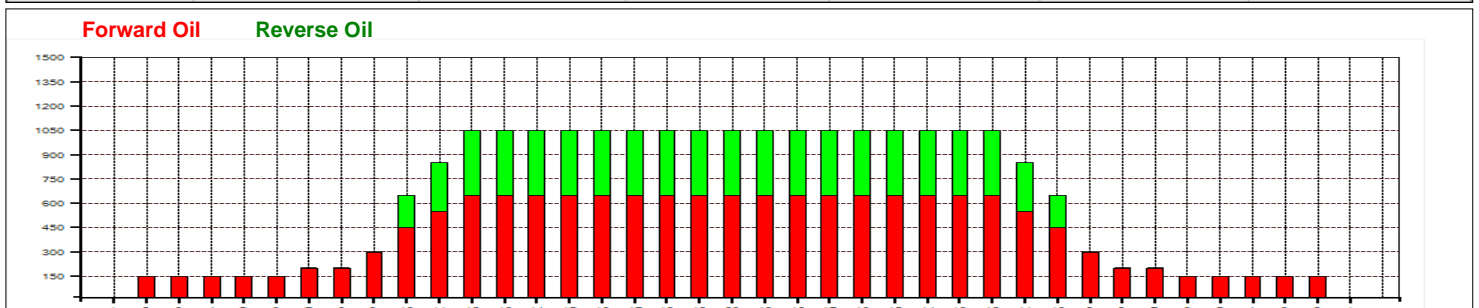


Buff



Kegel Landmark Stonehenge

Item	3L-7L:18L-18R	8L-12L:18L-18R	13L-17L:18L-18R	18L-18R:17R-13R	18L-18R:12R-8R	18L-18R:7R-3R
Description	Outside Track:Middle	Middle Track:Middle	Inside Track:Middle	Middle:Inside Track	Middle:Middle Track	Middle:Outside Track
Track Zone Ratio	6.56	1.72	1	1	1.72	6.56





# 2018 Regional Team

## Kegel Stone Street Modified



Oil Pattern Distance:	42 Feet	Reverse Brush Drop:	39 Feet	Oil Per Board:	50 uL
Forward Oil Total:	13.35 mL	Reverse Oil Total:	10.6 mL	Volume Oil Total:	23.95 mL
Forward Boards Crossed:	267 Boards	Reverse Boards Crossed:	212 Boards	Total Boards Crossed:	479 Boards

	Start	Stop	Loads	Speed	Crossed	Start	End	Feet	T.Oil
1	2L	2R	3	14	111	0.0	3.9	3.9	5550
2	9L	9R	1	14	23	3.9	5.8	1.9	1150
3	10L	10R	2	18	42	5.8	10.9	5.1	2100
4	11L	11R	3	18	57	10.9	18.5	7.6	2850
5	12L	12R	2	18	34	18.5	23.6	5.1	1700
6	2L	2R	0	18	0	23.6	34.0	10.4	0
7	2L	2R	0	26	0	34.0	38.0	4.0	0
8	2L	2R	0	30	0	38.0	42.0	4.0	0

Conditioner:  
Type In or Select  
One

TransferType:  
Type In or Select  
One

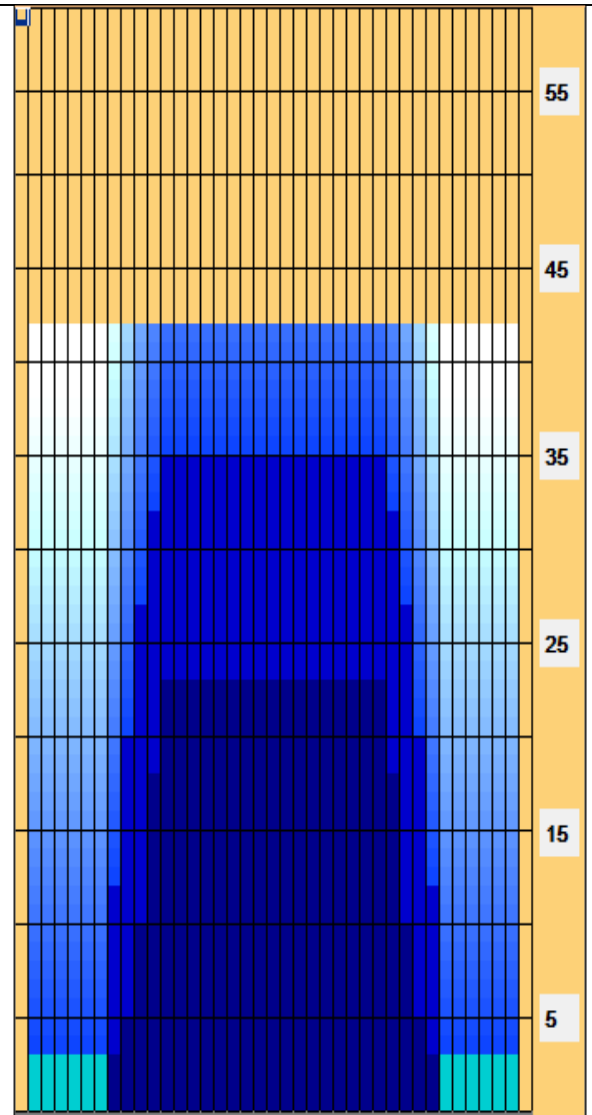
Forward

Reverse

Combined

Buff

	Start	Stop	Loads	Speed	Crossed	Start	End	Feet	T.Oil
1	2L	2R	0	30	0	42.0	35.0	-7.0	0
2	12L	12R	1	18	17	35.0	32.5	-2.5	850
3	11L	11R	2	18	38	32.5	27.4	-5.1	1900
4	10L	10R	3	18	63	27.4	19.8	-7.6	3150
5	9L	9R	3	18	69	19.8	12.2	-7.6	3450
6	8L	8R	1	14	25	12.2	10.3	-1.9	1250
7	2L	2R	0	10	0	10.3	0.0	-10.3	0



Item	3L-7L:18L-18R	8L-12L:18L-18R	13L-17L:18L-18R	18L-18R:17R-13R	18L-18R:12R-8R	18L-18R:7R-3R
Description	Outside Track:Middle	Middle Track:Middle	Inside Track:Middle	Middle: Inside Track	Middle:Middle Track	Middle:Outside Track
Track Zone Ratio	7	1.64	1	1	1.64	7

