



2015 Regional Singles

Kegel Wall Street Modified



Oil Pattern Distance:	39 Feet	Reverse Brush Drop:	36 Feet	Oil Per Board:	50 uL
Forward Oil Total:	10.65 mL	Reverse Oil Total:	10.9 mL	Volume Oil Total:	21.55 mL
Forward Boards Crossed:	213 Boards	Reverse Boards Crossed:	218 Boards	Total Boards Crossed:	431 Boards

	Start	Stop	Loads	Speed	Crossed	Start	End	Feet	T.Oil
1	2L	2R	2	18	74	0.0	2.5	2.5	3700
2	10L	10R	3	18	63	2.5	10.1	7.6	3150
3	10L	10R	2	18	42	10.1	15.2	5.1	2100
4	12L	12R	2	18	34	15.2	20.3	5.1	1700
5	2L	2R	0	18	0	20.3	24.0	3.7	0
6	2L	2R	0	22	0	24.0	32.0	8.0	0
7	2L	2R	0	30	0	32.0	39.0	7.0	0

Forward Reverse More

	Start	Stop	Loads	Speed	Crossed	Start	End	Feet	T.Oil
1	2L	2R	0	30	0	39.0	33.0	-6.0	0
2	11L	11R	4	22	76	33.0	20.6	-12.4	3800
3	10L	10R	5	18	105	20.6	7.9	-12.7	5250
4	2L	2R	1	14	37	7.9	6.0	-1.9	1850
5	2L	2R	0	14	0	6.0	0.0	-6.0	0

Forward Reverse More

Conditioner:
Type In or Select
One

TransferType:
Transfer Brush

Forward



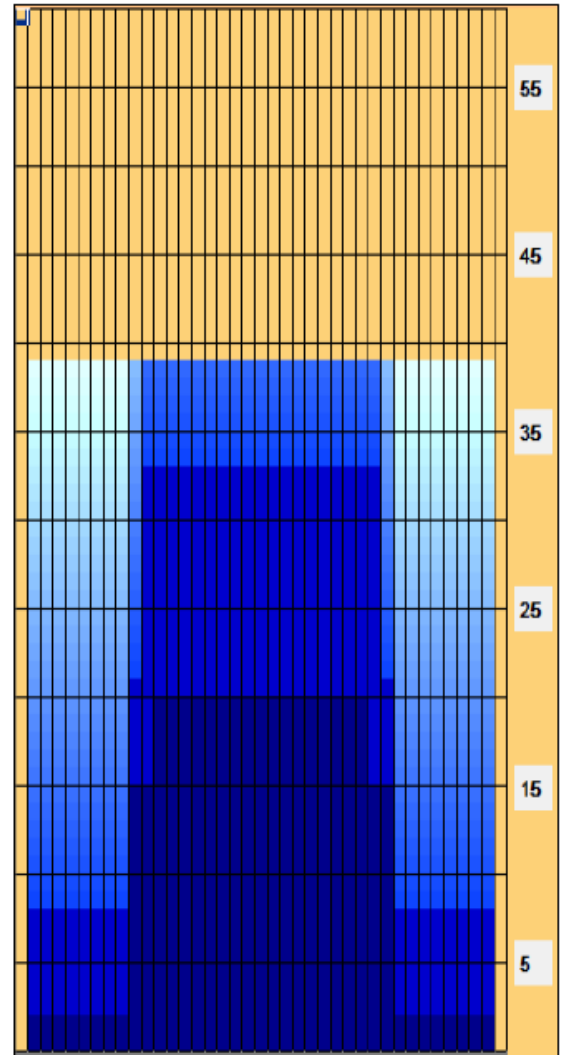
Reverse



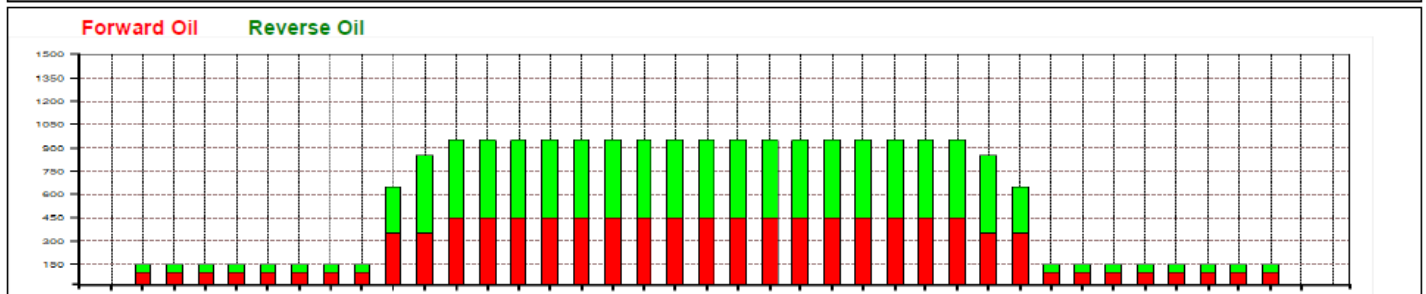
Combined



Buff



Item	3L-7L:18L-18R	8L-12L:18L-18R	13L-17L:18L-18R	18L-18R:17R-13R	18L-18R:12R-8R	18L-18R:7R-3R
Description	Outside Track:Middle	Middle Track:Middle	Inside Track:Middle	Middle: Inside Track	Middle:Middle Track	Middle:Outside Track
Track Zone Ratio	6.33	1.73	1	1	1.73	6.33





2016 Regional Singles

Kegel Stonehenge Modified



Oil Pattern Distance:	41 Feet	Reverse Brush Drop:	37 Feet	Oil Per Board:	50 uL
Forward Oil Total:	15.95 mL	Reverse Oil Total:	7.8 mL	Volume Oil Total:	23.75 mL
Forward Boards Crossed:	319 Boards	Reverse Boards Crossed:	156 Boards	Total Boards Crossed:	475 Boards

	Start	Stop	Loads	Speed	Crossed	Start	End	Feet	T.Oil
1	2L	2R	3	18	111	0.0	5.1	5.1	5550
2	7L	7R	1	18	27	5.1	7.6	2.5	1350
3	9L	9R	2	18	46	7.6	12.7	5.1	2300
4	10L	10R	3	18	63	12.7	20.3	7.6	3150
5	11L	11R	2	18	38	20.3	25.4	5.1	1900
6	12L	12R	2	18	34	25.4	30.5	5.1	1700
7	2L	2R	0	22	0	30.5	36.0	5.5	0
8	2L	2R	0	30	0	36.0	41.0	5.0	0

Conditioner:
Type In or Select
One

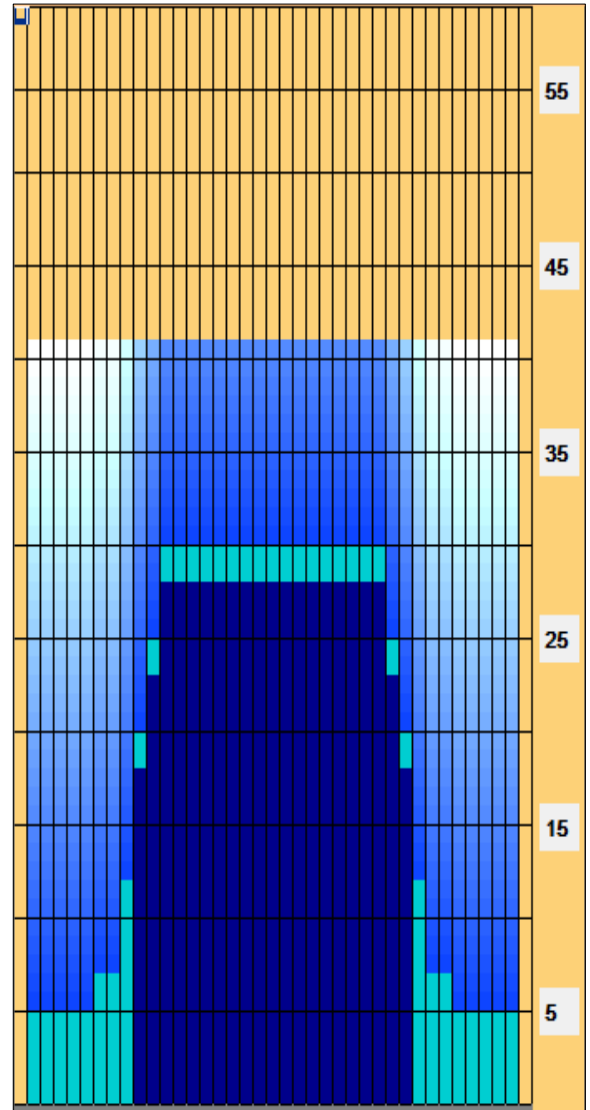
TransferType:
Transfer Brush

Forward

Reverse

Combined

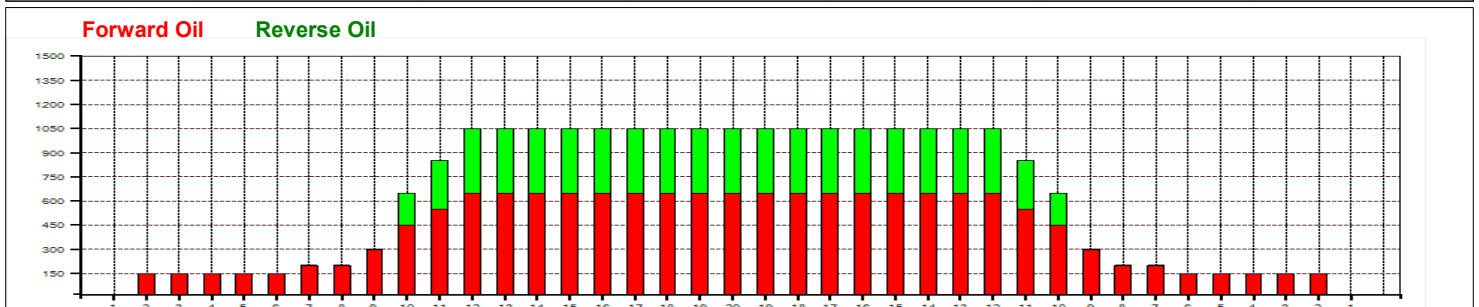
Buff



	Start	Stop	Loads	Speed	Crossed	Start	End	Feet	T.Oil
1	2L	2R	0	30	0	41.0	28.0	-13.0	0
2	12L	12R	2	18	34	28.0	22.9	-5.1	1700
3	11L	11R	2	18	38	22.9	17.8	-5.1	1900
4	10L	10R	4	18	84	17.8	7.6	-10.2	4200
5	2L	2R	0	14	0	7.6	0.0	-7.6	0

Kegel Landmark Stonehenge

Item	3L-7L:18L-18R	8L-12L:18L-18R	13L-17L:18L-18R	18L-18R:17R-13R	18L-18R:12R-8R	18L-18R:7R-3R
Description	Outside Track:Middle	Middle Track:Middle	Inside Track:Middle	Middle: Inside Track	Middle:Middle Track	Middle:Outside Track
Track Zone Ratio	6.56	1.72	1	1	1.72	6.56





2017 Regional Singles

Kegel Bourbon Street Modified



Oil Pattern Distance:	38 Feet	Reverse Brush	35 Feet	Oil Per	50 uL
Forward Oil Total:	17.45 mL	Reverse Oil	7.85 mL	Volume Oil Total:	25.3 mL
Forward Boards Crossed:	349 Boards	Reverse Boards Crossed:	157 Boards	Total Boards Crossed:	506 Boards

	Start	Stop	Loads	Speed	Crossed	Start	End	Feet	T.Oil
1	2L	2R	4	14	148	0.0	5.9	5.9	7400
2	9L	9R	1	18	23	5.9	8.4	2.5	1150
3	10L	10R	3	18	63	8.4	16.0	7.6	3150
4	11L	11R	3	18	57	16.0	23.6	7.6	2850
5	13L	13R	3	18	45	23.6	31.2	7.6	2250
6	14L	14R	1	22	13	31.2	34.3	3.1	650
7	2L	2R	0	26	0	34.3	38.0	3.7	0

Conditioner:
Type In or Select
One

TransferType:
Type In or Select
One

Forward



Reverse



Combined

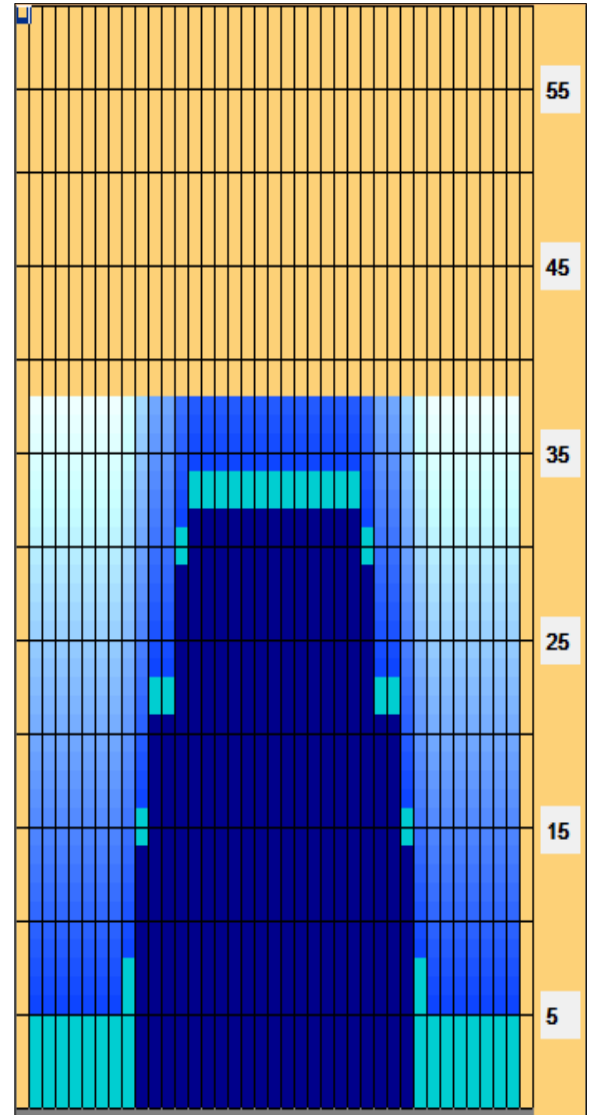


Buff

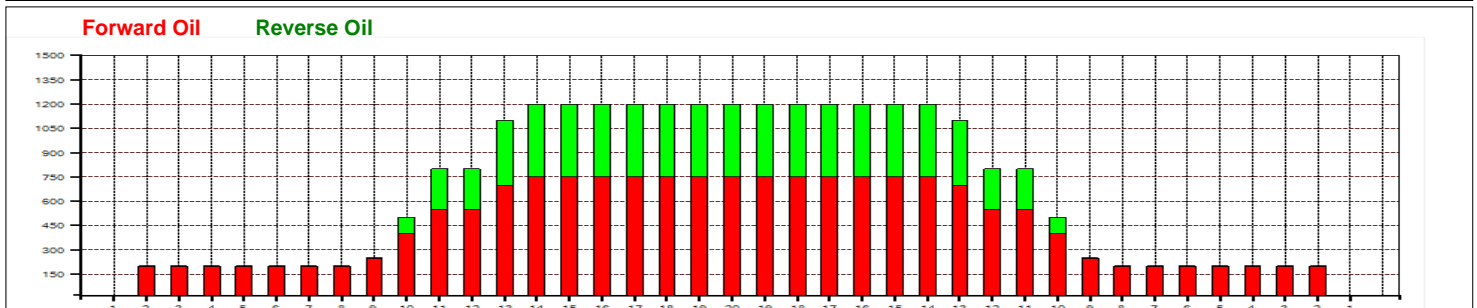


	Start	Stop	Loads	Speed	Crossed	Start	End	Feet	T.Oil
1	2L	2R	0	22	0	38.0	32.0	-6.0	0
2	14L	14R	1	22	13	32.0	28.9	-3.1	650
3	13L	13R	3	18	45	28.9	21.3	-7.6	2250
4	11L	11R	3	18	57	21.3	13.7	-7.6	2850
5	10L	10R	2	14	42	13.7	9.8	-3.9	2100
6	2L	2R	0	10	0	9.8	0.0	-9.8	0

Reverse drop brush at 34'



Item	3L-7L:18L-18R	8L-12L:18L-18R	13L-17L:18L-18R	18L-18R:17R-13R	18L-18R:12R-8R	18L-18R:7R-3R
Description	Outside Track:Middle	Middle Track:Middle	Inside Track:Middle	Middle:Inside Track	Middle:Middle Track	Middle:Outside Track
Track Zone Ratio	6	2.35	1.02	1.02	2.35	6





2018 Regional Singles

Yellow Brick Road Modified



Oil Pattern Distance:	40 Feet	Reverse Brush Drop:	30 Feet	Oil Per Board:	50 uL
Forward Oil Total:	16.7 mL	Reverse Oil Total:	7.15 mL	Volume Oil Total:	23.85 mL
Forward Boards Crossed:	334 Boards	Reverse Boards Crossed:	143 Boards	Total Boards Crossed:	477 Boards

	Start	Stop	Loads	Speed	Crossed	Start	End	Feet	T.Oil
1	2L	2R	3	14	111	0.0	3.9	3.9	5550
2	8L	8R	1	14	25	3.9	5.8	1.9	1250
3	9L	9R	1	14	23	5.8	7.7	1.9	1150
4	10L	10R	2	14	42	7.7	11.6	3.9	2100
5	10L	10R	2	18	42	11.6	16.7	5.1	2100
6	11L	11R	3	18	57	16.7	24.3	7.6	2850
7	12L	12R	2	18	34	24.3	29.4	5.1	1700
8	2L	2R	0	18	0	29.4	34.0	4.6	0
9	2L	2R	0	22	0	34.0	40.0	6.0	0

	Start	Stop	Loads	Speed	Crossed	Start	End	Feet	T.Oil
1	2L	2R	0	26	0	40.0	24.0	-16.0	0
2	12L	12R	1	22	17	24.0	20.9	-3.1	850
3	11L	11R	2	18	38	20.9	15.8	-5.1	1900
4	10L	10R	2	18	42	15.8	10.7	-5.1	2100
5	9L	9R	2	14	46	10.7	6.8	-3.9	2300
6	2L	2R	0	14	0	6.8	0.0	-6.8	0

Conditioner:
Type In or Select
One

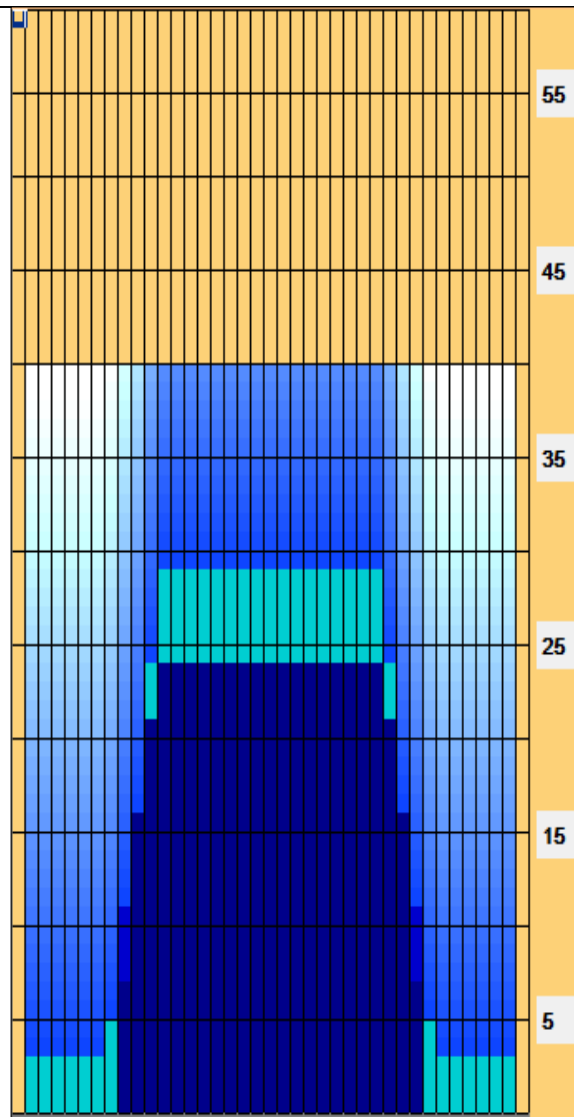
TransferType:
Type In or Select
One

Forward

Reverse

Combined

Buff



Modified YBR

Item	3L-7L:18L-18R	8L-12L:18L-18R	13L-17L:18L-18R	18L-18R:17R-13R	18L-18R:12R-8R	18L-18R:7R-3R
Description	Outside Track:Middle	Middle Track:Middle	Inside Track:Middle	Middle: Inside Track	Middle:Middle Track	Middle:Outside Track
Track Zone Ratio	7	1.67	1	1	1.67	7

