

## **Team Options:**

- Modified Easy Street
- Modified Stone Street
- Modified Wall Street
- Modified White #1
  
- **Modified Bourbon Street**  
(used in 2017, will return in 2019)



# Modified Easy Street

**Oil Pattern Distance:** 41 Feet      **Reverse Brush Drop:** 35 Feet      **Oil Per Board:** 50 uL  
**Forward Oil Total:** 12 mL      **Reverse Oil Total:** 10.95 mL      **Volume Oil Total:** 22.95 mL  
**Forward Boards Crossed:** 240 Boards      **Reverse Boards Crossed:** 219 Boards      **Total Boards Crossed:** 459 Boards

	Start	Stop	Loads	Speed	Crossed	Start	End	Feet	T.Oil
1	2L	2R	3	14	111	0.0	3.9	3.9	5550
2	10L	10R	4	18	84	3.9	14.1	10.2	4200
3	13L	13R	3	18	45	14.1	21.7	7.6	2250
4	2L	2R	0	18	0	21.7	24.0	2.3	0
5	2L	2R	0	22	0	24.0	33.0	9.0	0
6	2L	2R	0	30	0	33.0	41.0	8.0	0

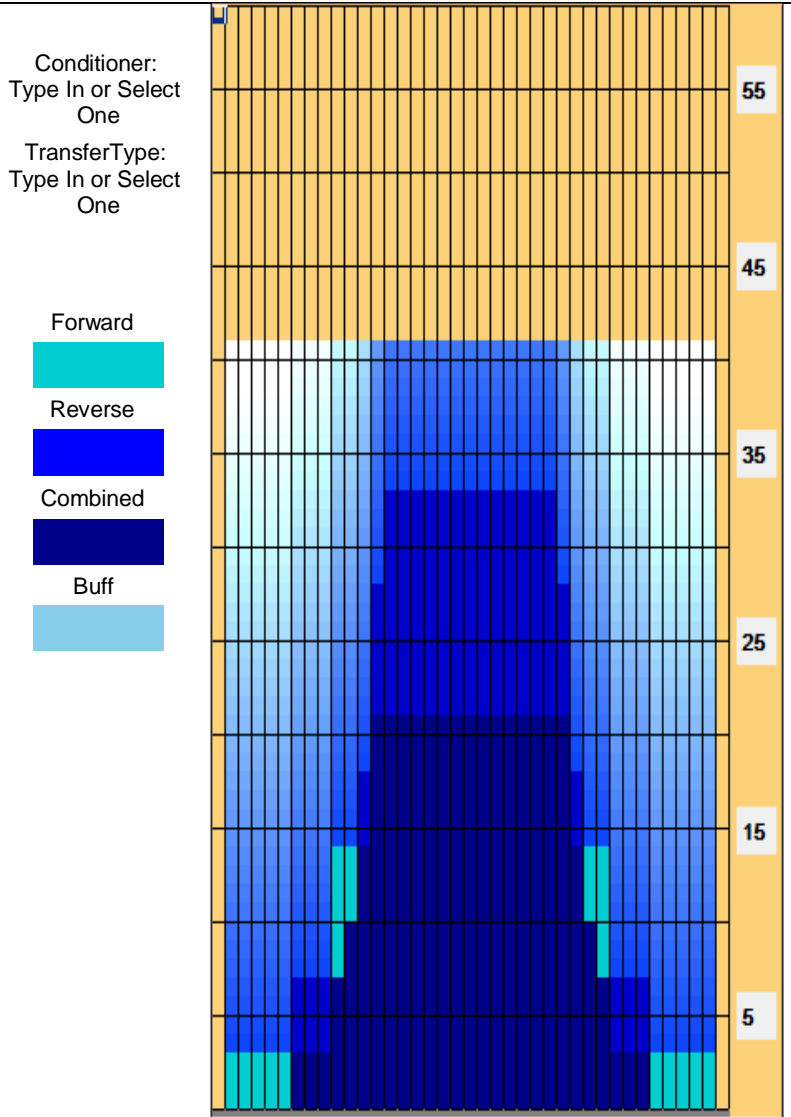
Conditioner:  
Type In or Select One

TransferType:  
Type In or Select One

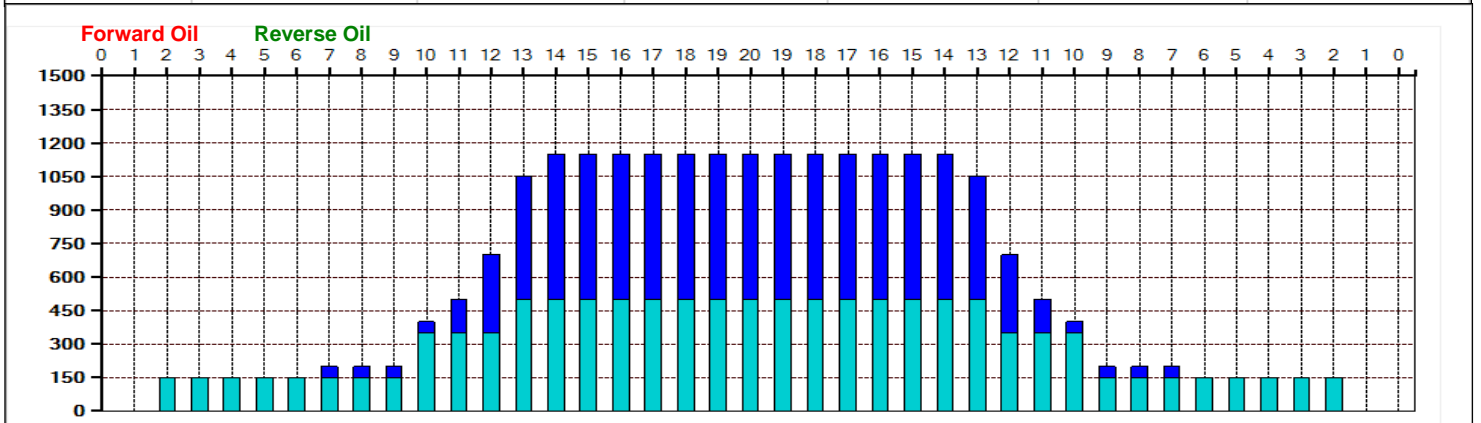
Forward  
Reverse  
More

	Start	Stop	Loads	Speed	Crossed	Start	End	Feet	T.Oil
1	2L	2R	0	30	0	41.0	33.0	-8.0	0
2	14L	14R	2	18	26	33.0	27.9	-5.1	1300
3	13L	13R	4	18	60	27.9	17.7	-10.2	3000
4	12L	12R	4	14	68	17.7	9.8	-7.9	3400
5	11L	11R	2	10	38	9.8	7.0	-2.8	1900
6	7L	7R	1	10	27	7.0	5.6	-1.4	1350
7	2L	2R	0	10	0	5.6	0.0	-5.6	0

Forward  
Reverse  
More



Item	3L-7L:18L-18R	8L-12L:18L-18R	13L-17L:18L-18R	18L-18R:17R-13R	18L-18R:12R-8R	18L-18R:7R-3R
Description	Outside Track:Middle	Middle Track:Middle	Inside Track:Middle	Middle: Inside Track	Middle:Middle Track	Middle:Outside Track
Track Zone Ratio	7.19	2.88	1.02	1.02	2.88	7.19





# Modified Stone Street

**Oil Pattern Distance:** 42 Feet      **Reverse Brush Drop:** 39 Feet      **Oil Per Board:** 50 uL  
**Forward Oil Total:** 13.35 mL      **Reverse Oil Total:** 10.6 mL      **Volume Oil Total:** 23.95 mL  
**Forward Boards Crossed:** 267 Boards      **Reverse Boards Crossed:** 212 Boards      **Total Boards Crossed:** 479 Boards

	Start	Stop	Loads	Speed	Crossed	Start	End	Feet	T.Oil
1	2L	2R	3	14	111	0.0	3.9	3.9	5550
2	9L	9R	1	14	23	3.9	5.8	1.9	1150
3	10L	10R	2	18	42	5.8	10.9	5.1	2100
4	11L	11R	3	18	57	10.9	18.5	7.6	2850
5	12L	12R	2	18	34	18.5	23.6	5.1	1700
6	2L	2R	0	18	0	23.6	34.0	10.4	0
7	2L	2R	0	26	0	34.0	38.0	4.0	0
8	2L	2R	0	30	0	38.0	42.0	4.0	0

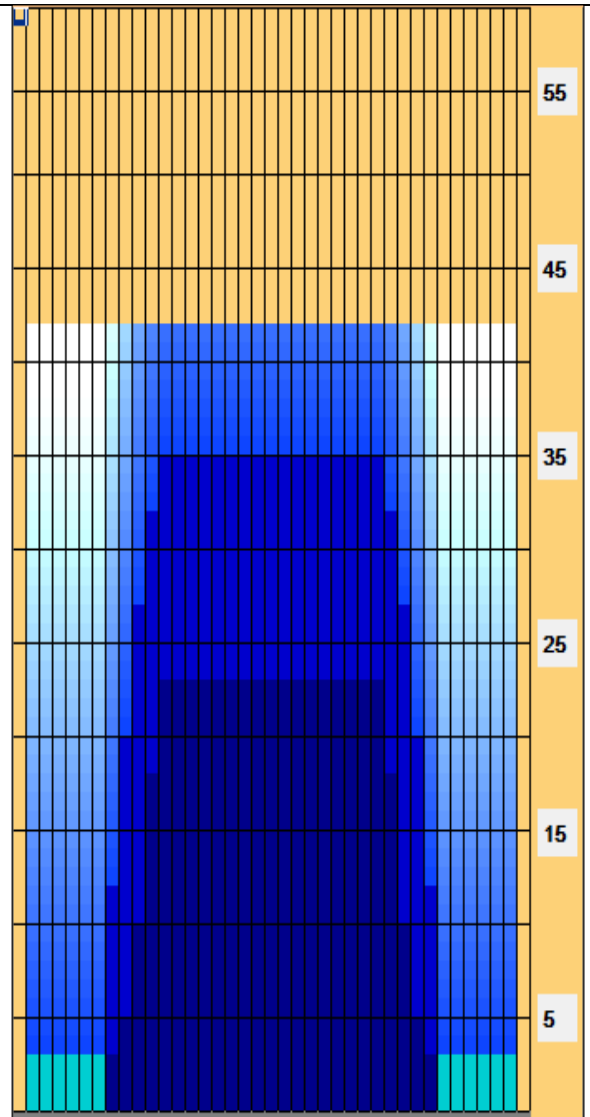
<< >> Forward Reverse More

	Start	Stop	Loads	Speed	Crossed	Start	End	Feet	T.Oil
1	2L	2R	0	30	0	42.0	35.0	-7.0	0
2	12L	12R	1	18	17	35.0	32.5	-2.5	850
3	11L	11R	2	18	38	32.5	27.4	-5.1	1900
4	10L	10R	3	18	63	27.4	19.8	-7.6	3150
5	9L	9R	3	18	69	19.8	12.2	-7.6	3450
6	8L	8R	1	14	25	12.2	10.3	-1.9	1250
7	2L	2R	0	10	0	10.3	0.0	-10.3	0

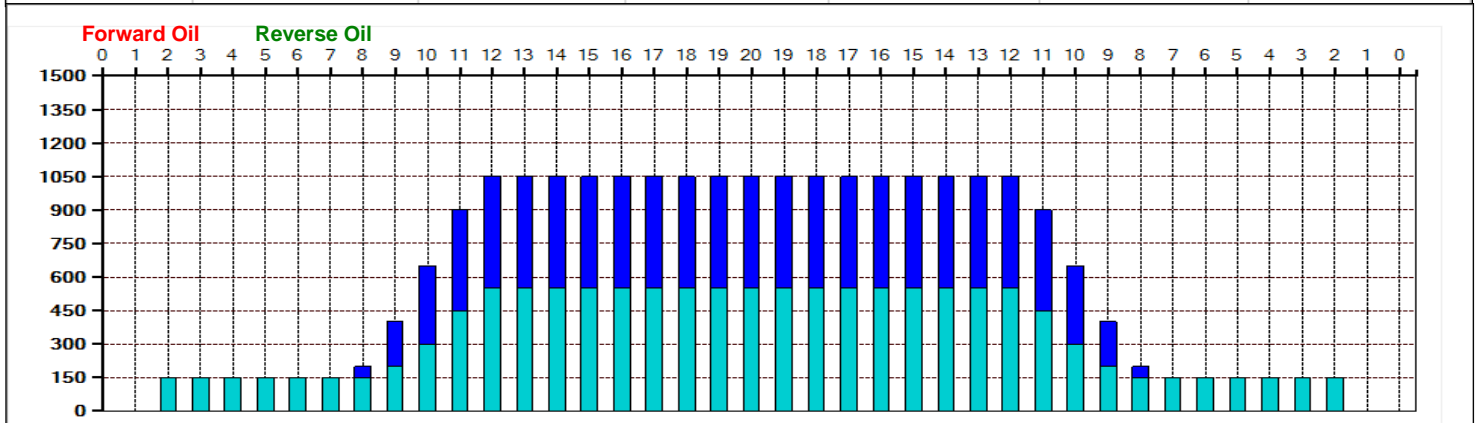
<< >> Forward Reverse More

Conditioner:  
 Type In or Select One  
 TransferType:  
 Type In or Select One

- Forward
- Reverse
- Combined
- Buff



Item	3L-7L:18L-18R	8L-12L:18L-18R	13L-17L:18L-18R	18L-18R:17R-13R	18L-18R:12R-8R	18L-18R:7R-3R
Description	Outside Track:Middle	Middle Track:Middle	Inside Track:Middle	Middle: Inside Track	Middle:Middle Track	Middle:Outside Track
Track Zone Ratio	7	1.64	1	1	1.64	7





# Modified Wall Street

**Oil Pattern Distance:** 42 Feet      **Reverse Brush Drop:** 37 Feet      **Oil Per Board:** 50 uL  
**Forward Oil Total:** 10.65 mL      **Reverse Oil Total:** 13.8 mL      **Volume Oil Total:** 24.45 mL  
**Forward Boards Crossed:** 213 Boards      **Reverse Boards Crossed:** 276 Boards      **Total Boards Crossed:** 489 Boards

	Start	Stop	Loads	Speed	Crossed	Start	End	Feet	T.Oil
1	2L	2R	2	18	74	0.0	2.5	2.5	3700
2	10L	10R	3	18	63	2.5	10.1	7.6	3150
3	10L	10R	2	18	42	10.1	15.2	5.1	2100
4	12L	12R	2	18	34	15.2	20.3	5.1	1700
5	2L	2R	0	18	0	20.3	24.0	3.7	0
6	2L	2R	0	22	0	24.0	32.0	8.0	0
7	2L	2R	0	30	0	32.0	42.0	10.0	0

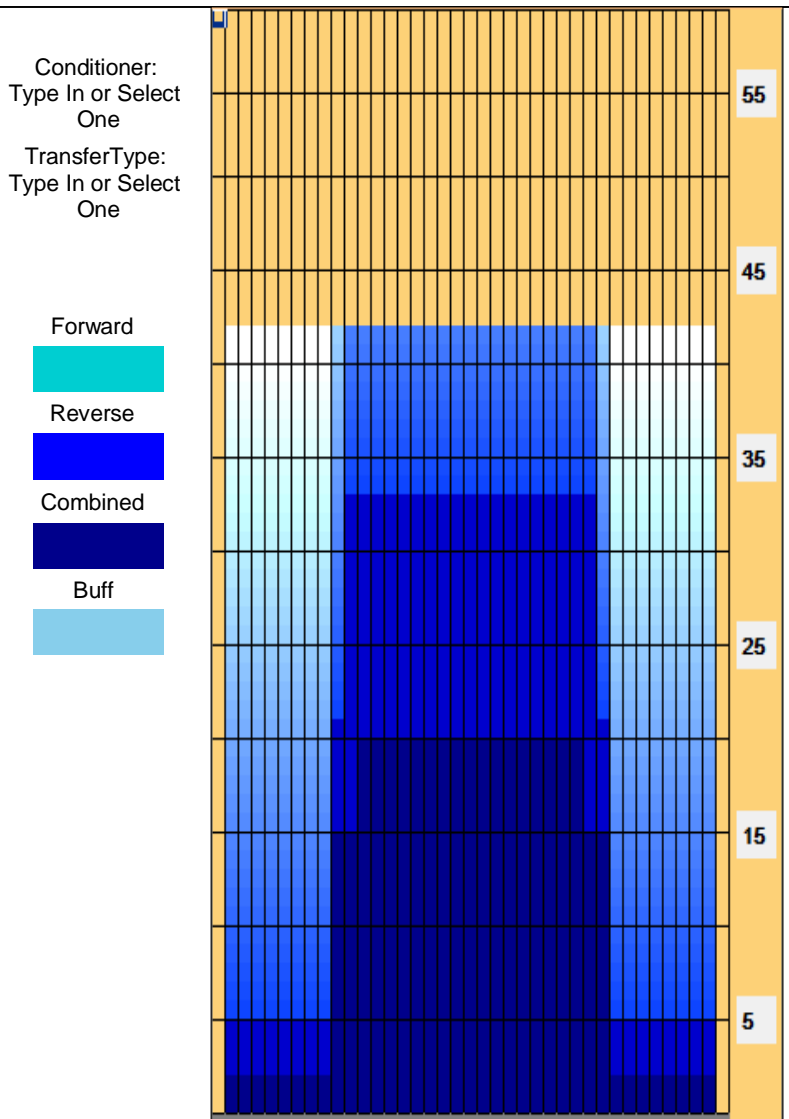
Conditioner:  
Type In or Select One

TransferType:  
Type In or Select One

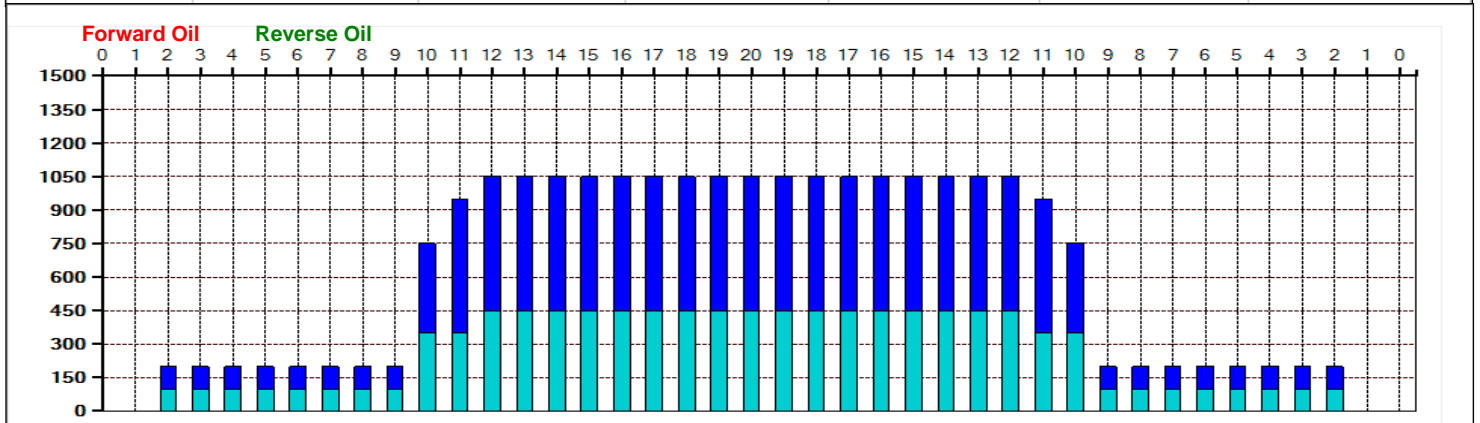
Forward  
Reverse  
More

	Start	Stop	Loads	Speed	Crossed	Start	End	Feet	T.Oil
1	2L	2R	0	30	0	42.0	33.0	-9.0	0
2	11L	11R	4	22	76	33.0	20.6	-12.4	3800
3	10L	10R	6	18	126	20.6	5.3	-15.3	6300
4	2L	2R	2	14	74	5.3	1.4	-3.9	3700
5	2L	2R	0	14	0	1.4	0.0	-1.4	0

Forward  
Reverse  
More



Item	3L-7L:18L-18R	8L-12L:18L-18R	13L-17L:18L-18R	18L-18R:17R-13R	18L-18R:12R-8R	18L-18R:7R-3R
Description	Outside Track:Middle	Middle Track:Middle	Inside Track:Middle	Middle: Inside Track	Middle:Middle Track	Middle:Outside Track
Track Zone Ratio	5.25	1.67	1	1	1.67	5.25





# Modified White #1

**Oil Pattern Distance:** 41 Feet      **Reverse Brush Drop:** 38 Feet      **Oil Per Board:** 50 uL  
**Forward Oil Total:** 13.75 mL      **Reverse Oil Total:** 10 mL      **Volume Oil Total:** 23.75 mL  
**Forward Boards Crossed:** 275 Boards      **Reverse Boards Crossed:** 200 Boards      **Total Boards Crossed:** 475 Boards

	Start	Stop	Loads	Speed	Crossed	Start	End	Feet	T.Oil
1	2L	2R	4	18	148	0.0	7.6	7.6	7400
2	10L	10R	3	18	63	7.6	15.2	7.6	3150
3	12L	12R	2	18	34	15.2	20.3	5.1	1700
4	13L	13R	2	18	30	20.3	25.4	5.1	1500
5	2L	2R	0	22	0	25.4	33.0	7.6	0
6	2L	2R	0	30	0	33.0	41.0	8.0	0

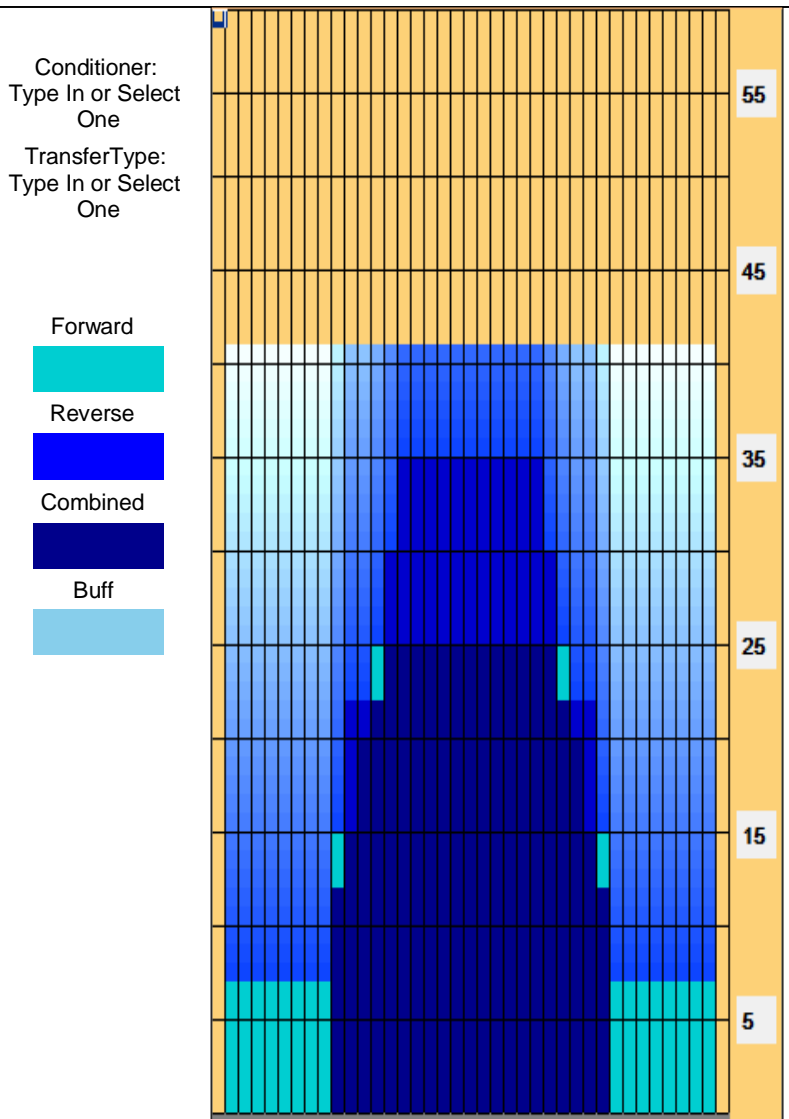
Conditioner:  
Type In or Select One

TransferType:  
Type In or Select One

Forward  
Reverse  
More

	Start	Stop	Loads	Speed	Crossed	Start	End	Feet	T.Oil
1	2L	2R	0	22	0	41.0	35.0	-6.0	0
2	15L	15R	2	18	22	35.0	29.9	-5.1	1100
3	14L	14R	3	18	39	29.9	22.3	-7.6	1950
4	11L	11R	4	18	76	22.3	12.1	-10.2	3800
5	10L	10R	3	10	63	12.1	7.9	-4.2	3150
6	2L	2R	0	10	0	7.9	0.0	-7.9	0

Forward  
Reverse  
More



Item	3L-7L:18L-18R	8L-12L:18L-18R	13L-17L:18L-18R	18L-18R:17R-13R	18L-18R:12R-8R	18L-18R:7R-3R
Description	Outside Track:Middle	Middle Track:Middle	Inside Track:Middle	Middle: Inside Track	Middle:Middle Track	Middle:Outside Track
Track Zone Ratio	5.75	2.4	1.06	1.06	2.4	5.75

