



# Modified Stone Street

**Oil Pattern Distance:** 42 Feet      **Reverse Brush Drop:** 39 Feet      **Oil Per Board:** 50 uL  
**Forward Oil Total:** 13.35 mL      **Reverse Oil Total:** 10.6 mL      **Volume Oil Total:** 23.95 mL  
**Forward Boards Crossed:** 267 Boards      **Reverse Boards Crossed:** 212 Boards      **Total Boards Crossed:** 479 Boards

	Start	Stop	Loads	Speed	Crossed	Start	End	Feet	T.Oil
1	2L	2R	3	14	111	0.0	3.9	3.9	5550
2	9L	9R	1	14	23	3.9	5.8	1.9	1150
3	10L	10R	2	18	42	5.8	10.9	5.1	2100
4	11L	11R	3	18	57	10.9	18.5	7.6	2850
5	12L	12R	2	18	34	18.5	23.6	5.1	1700
6	2L	2R	0	18	0	23.6	34.0	10.4	0
7	2L	2R	0	26	0	34.0	38.0	4.0	0
8	2L	2R	0	30	0	38.0	42.0	4.0	0

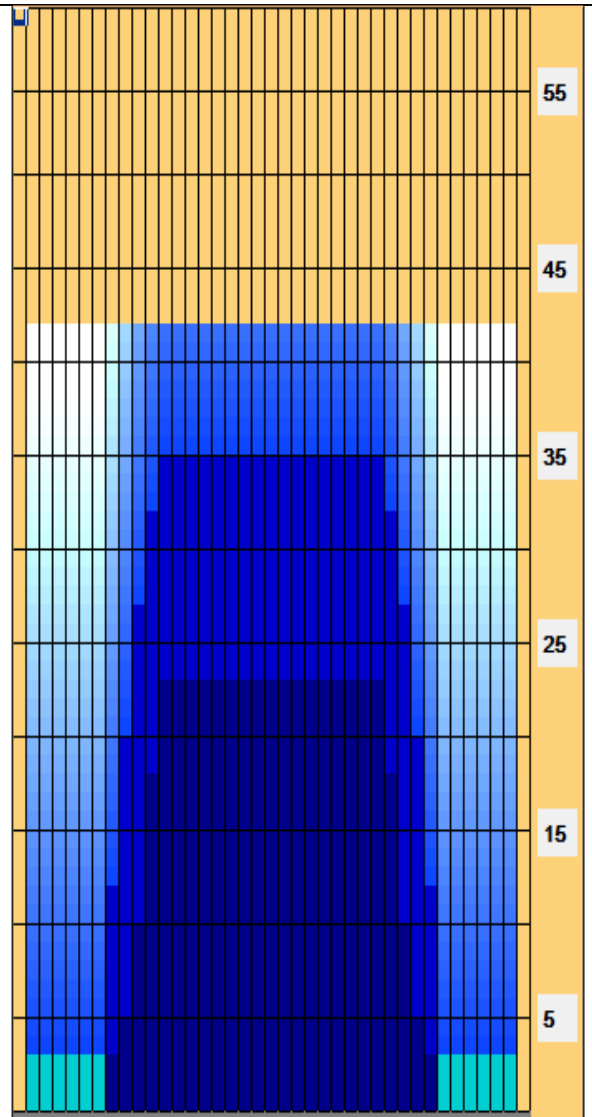
<< >> Forward Reverse More

	Start	Stop	Loads	Speed	Crossed	Start	End	Feet	T.Oil
1	2L	2R	0	30	0	42.0	35.0	-7.0	0
2	12L	12R	1	18	17	35.0	32.5	-2.5	850
3	11L	11R	2	18	38	32.5	27.4	-5.1	1900
4	10L	10R	3	18	63	27.4	19.8	-7.6	3150
5	9L	9R	3	18	69	19.8	12.2	-7.6	3450
6	8L	8R	1	14	25	12.2	10.3	-1.9	1250
7	2L	2R	0	10	0	10.3	0.0	-10.3	0

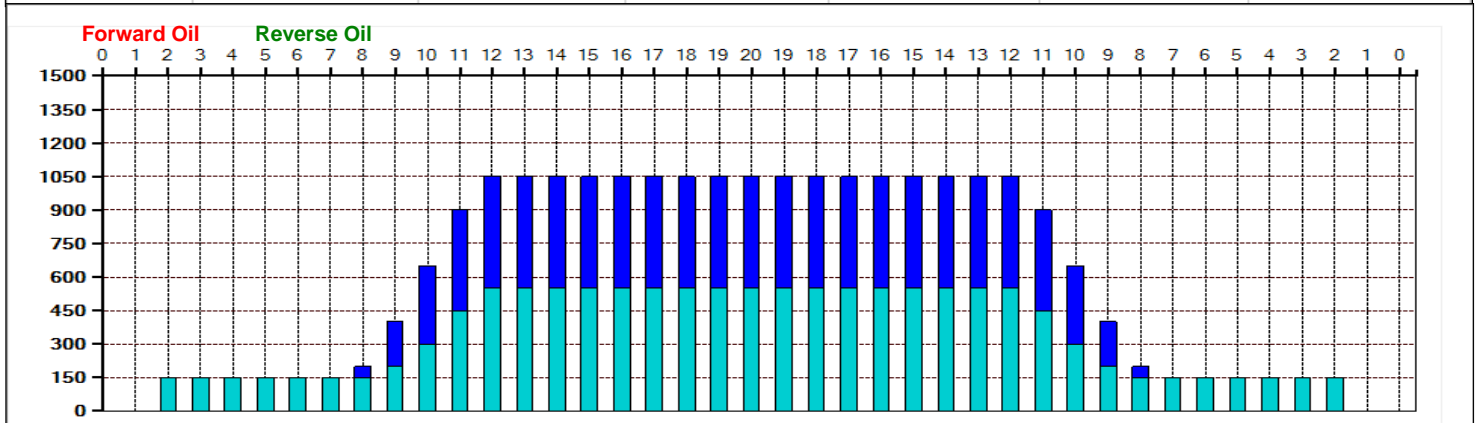
<< >> Forward Reverse More

Conditioner:  
 Type In or Select One  
  
 TransferType:  
 Type In or Select One

- Forward
- Reverse
- Combined
- Buff



Item	3L-7L:18L-18R	8L-12L:18L-18R	13L-17L:18L-18R	18L-18R:17R-13R	18L-18R:12R-8R	18L-18R:7R-3R
Description	Outside Track:Middle	Middle Track:Middle	Inside Track:Middle	Middle: Inside Track	Middle:Middle Track	Middle:Outside Track
Track Zone Ratio	7	1.64	1	1	1.64	7



# Kegel Recreation Stone Street



**Oil Pattern Distance:** 42 Feet      **Reverse Brush Drop:** 42 Feet      **Oil Per Board:** 50 uL  
**Forward Oil Total:** 11.5 mL      **Reverse Oil Total:** 11.65 mL      **Volume Oil Total:** 23.15 mL  
**Forward Boards Crossed:** 230 Boards      **Reverse Boards Crossed:** 233 Boards      **Total Boards Crossed:** 463 Boards

	Start	Stop	Loads	Speed	Crossed	Start	End	Feet	T.Oil
1	2L	2R	2	14	74	0.0	1.9	1.9	3700
2	9L	9R	1	14	23	1.9	3.8	1.9	1150
3	10L	10R	2	18	42	3.8	8.9	5.1	2100
4	11L	11R	3	18	57	8.9	16.5	7.6	2850
5	12L	12R	2	18	34	16.5	21.6	5.1	1700
6	2L	2R	0	18	0	21.6	34.0	12.4	0
7	2L	2R	0	26	0	34.0	38.0	4.0	0
8	2L	2R	0	30	0	38.0	42.0	4.0	0

Conditioner:  
Type In or Select One

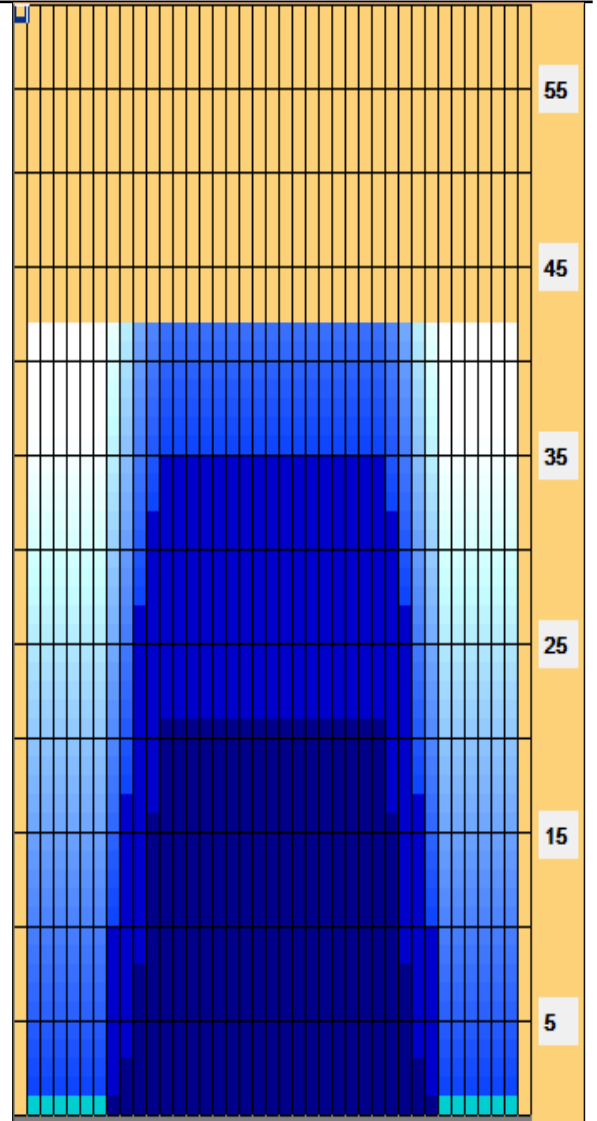
TransferType:  
Type In or Select One

Navigation: Forward Reverse More

	Start	Stop	Loads	Speed	Crossed	Start	End	Feet	T.Oil
1	2L	2R	0	30	0	42.0	35.0	-7.0	0
2	12L	12R	1	18	17	35.0	32.5	-2.5	850
3	11L	11R	2	18	38	32.5	27.4	-5.1	1900
4	10L	10R	4	18	84	27.4	17.2	-10.2	4200
5	9L	9R	3	18	69	17.2	9.6	-7.6	3450
6	8L	8R	1	14	25	9.6	7.7	-1.9	1250
7	2L	2R	0	10	0	7.7	0.0	-7.7	0

Navigation: Forward Reverse More

- Forward
- Reverse
- Combined
- Buff



Item	3L-7L:18L-18R	8L-12L:18L-18R	13L-17L:18L-18R	18L-18R:17R-13R	18L-18R:12R-8R	18L-18R:7R-3R
Description	Outside Track:Middle	Middle Track:Middle	Inside Track:Middle	Middle: Inside Track	Middle:Middle Track	Middle:Outside Track
Track Zone Ratio	10.5	1.69	1	1	1.69	10.5

