



# 2016 EASTERN PA CHAMPIONSHIPS

Team Event (Saturday, March 5<sup>th</sup>)

{Modified Yellow Brick Road}



Oil Pattern Distance:	<b>39 Feet</b>	Reverse Brush Drop:	30 Feet	Oil Per Board:	50 uL
Forward Oil Total:	16.7 mL	Reverse Oil Total:	6 mL	Volume Oil Total:	22.7 mL
Forward Boards Crossed:	334 Boards	Reverse Boards Crossed:	120 Boards	Total Boards Crossed:	454 Boards

	Start	Stop	Loads	Speed	Crossed	Start	End	Feet	T.Oil
1	2L	2R	3	14	111	0.0	3.9	3.9	5550
2	8L	8R	1	14	25	3.9	5.8	1.9	1250
3	9L	9R	1	14	23	5.8	7.7	1.9	1150
4	10L	10R	2	14	42	7.7	11.6	3.9	2100
5	10L	10R	2	18	42	11.6	16.7	5.1	2100
6	11L	11R	3	18	57	16.7	24.3	7.6	2850
7	12L	12R	2	18	34	24.3	29.4	5.1	1700
8	2L	2R	0	18	0	29.4	34.0	4.6	0
9	2L	2R	0	22	0	34.0	39.0	5.0	0

Navigation: Forward Reverse More

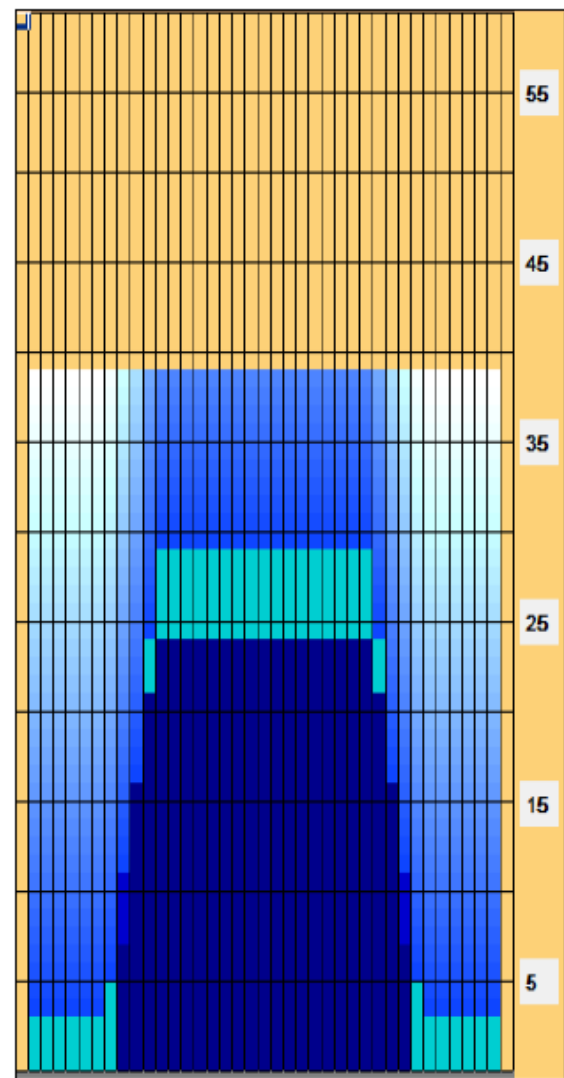
	Start	Stop	Loads	Speed	Crossed	Start	End	Feet	T.Oil
1	2L	2R	0	26	0	39.0	24.0	-15.0	0
2	12L	12R	1	22	17	24.0	20.9	-3.1	850
3	11L	11R	2	18	38	20.9	15.8	-5.1	1900
4	10L	10R	2	18	42	15.8	10.7	-5.1	2100
5	9L	9R	1	14	23	10.7	8.8	-1.9	1150
6	2L	2R	0	14	0	8.8	0.0	-8.8	0

Navigation: Forward Reverse More

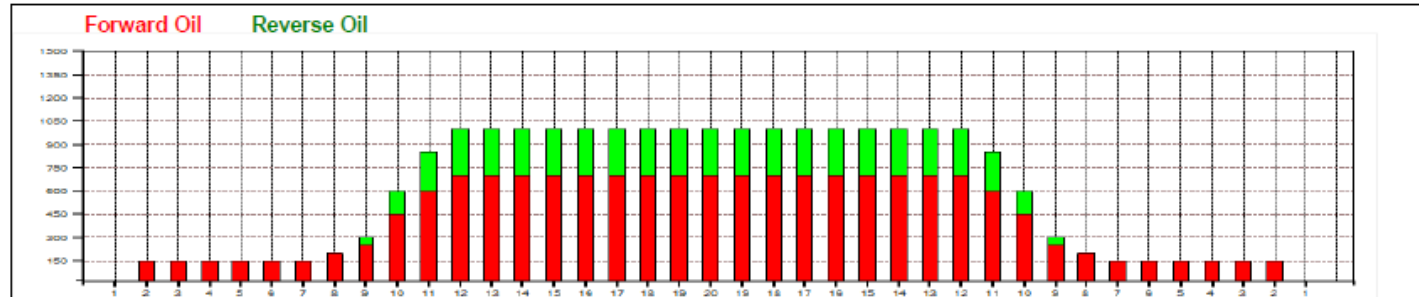
Conditioner:  
Type In or Select One

TransferType:  
Transfer Brush

- Forward
- Reverse
- Combined
- Buff



Item	3L-7L:18L-18R	8L-12L:18L-18R	13L-17L:18L-18R	18L-18R:17R-13R	18L-18R:12R-8R	18L-18R:7R-3R
Description	Outside Track:Middle	Middle Track:Middle	Inside Track:Middle	Middle: Inside Track	Middle:Middle Track	Middle:Outside Track
Track Zone Ratio	6.67	1.69	1	1	1.69	6.67



# Kegel Yellow Brick Road



**Oil Pattern Distance:** 41 Feet  
**Reverse Brush Drop:** 30 Feet  
**Oil Per Board:** 50 uL  
**Forward Oil Total:** 16.7 mL  
**Reverse Oil Total:** 6 mL  
**Volume Oil Total:** 22.7 mL  
**Forward Boards Crossed:** 334 Boards  
**Reverse Boards Crossed:** 120 Boards  
**Total Boards Crossed:** 454 Boards

	Start	Stop	Loads	Speed	Crossed	Start	End	Feet	T.Oil
1	2L	2R	3	14	111	0.0	3.9	3.9	5550
2	8L	8R	1	14	25	3.9	5.8	1.9	1250
3	9L	9R	1	14	23	5.8	7.7	1.9	1150
4	10L	10R	2	14	42	7.7	11.6	3.9	2100
5	10L	10R	2	18	42	11.6	16.7	5.1	2100
6	11L	11R	3	18	57	16.7	24.3	7.6	2850
7	12L	12R	2	18	34	24.3	29.4	5.1	1700
8	2L	2R	0	18	0	29.4	34.0	4.6	0
9	2L	2R	0	22	0	34.0	41.0	7.0	0

Conditioner:  
Type In or Select One

TransferType:  
Type In or Select One

Forward Reverse More

	Start	Stop	Loads	Speed	Crossed	Start	End	Feet	T.Oil
1	2L	2R	0	26	0	41.0	22.0	-19.0	0
2	12L	12R	1	22	17	22.0	18.9	-3.1	850
3	11L	11R	2	18	38	18.9	13.8	-5.1	1900
4	10L	10R	2	18	42	13.8	8.7	-5.1	2100
5	9L	9R	1	14	23	8.7	6.8	-1.9	1150
6	2L	2R	0	14	0	6.8	0.0	-6.8	0

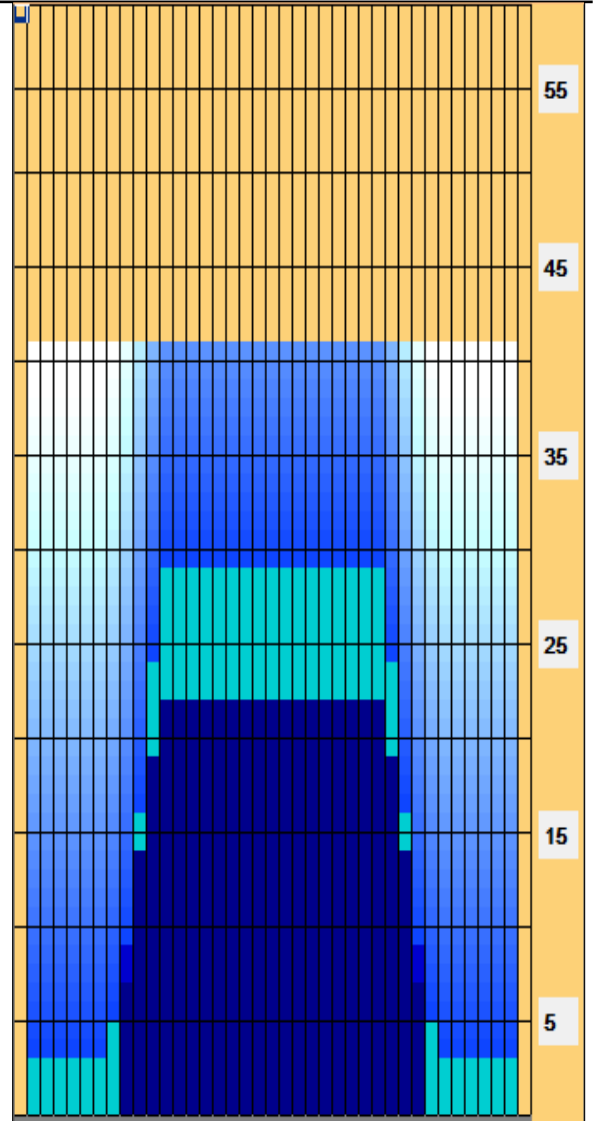
Forward

Reverse

Combined

Buff

Forward Reverse More



Item	3L-7L:18L-18R	8L-12L:18L-18R	13L-17L:18L-18R	18L-18R:17R-13R	18L-18R:12R-8R	18L-18R:7R-3R
Description	Outside Track:Middle	Middle Track:Middle	Inside Track:Middle	Middle: Inside Track	Middle:Middle Track	Middle:Outside Track
Track Zone Ratio	6.67	1.69	1	1	1.69	6.67

