

2013 26th European Youth Championships

Oil Pattern Distance: **39 Feet**
Forward Oil Total: **14.8 mL**
Forward Boards Crossed: **370 Boards**

Reverse Brush Drop: **38 Feet**
Reverse Oil Total: **11.16 mL**
Reverse Boards Crossed: **279 Boards**

Oil Per Board: **40 uL**
Volume Oil Total: **25.96 mL**
Total Boards Crossed: **649 Boards**

	Start	Stop	Loads	Speed	Crossed	Start	End	Feet	T.Oil
1	2L	2R	4	14	148	0.0	5.9	5.9	5920
2	7L	7R	1	18	27	5.9	8.4	2.5	1080
3	8L	8R	2	18	50	8.4	13.5	5.1	2000
4	9L	9R	3	18	69	13.5	21.1	7.6	2760
5	11L	11R	4	18	76	21.1	31.3	10.2	3040
6	2L	2R	0	18	0	31.3	32.0	0.7	0
7	2L	2R	0	26	0	32.0	39.0	7.0	0

Forward Reverse More

	Start	Stop	Loads	Speed	Crossed	Start	End	Feet	T.Oil
1	2L	2R	0	26	0	39.0	27.0	-12.0	0
2	10L	10R	4	18	84	27.0	16.8	-10.2	3360
3	9L	9R	2	14	46	16.8	12.9	-3.9	1840
4	7L	7R	2	14	54	12.9	9.0	-3.9	2160
5	6L	6R	2	14	58	9.0	5.1	-3.9	2320
6	2L	2R	1	10	37	5.1	3.7	-1.4	1480
7	2L	2R	0	10	0	3.7	0.0	-3.7	0

Forward Reverse More

Conditioner:
Type In or Select
One

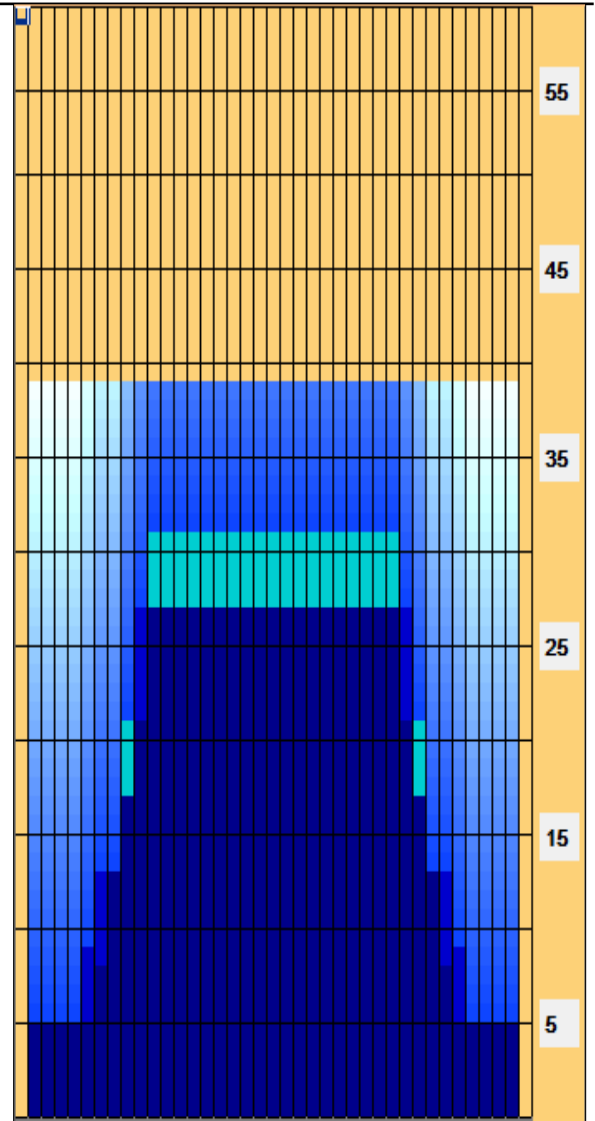
TransferType:
Type In or Select
One

Forward

Reverse

Combined

Buff



Item	3L-7L:18L-18R	8L-12L:18L-18R	13L-17L:18L-18R	18L-18R:17R-13R	18L-18R:12R-8R	18L-18R:7R-3R
Description	Outside Track:Middle	Middle Track:Middle	Inside Track:Middle	Middle: Inside Track	Middle:Middle Track	Middle:Outside Track
Track Zone Ratio	3.91	1.25	1	1	1.25	3.91

