



2019 Wildcard & Independent Singles Qualifier



Oil Pattern Distance: 42 Feet **Reverse Brush Drop:** 38 Feet **Oil Per Board:** 50 uL
Forward Oil Total: 17.15 mL **Reverse Oil Total:** 10.6 mL **Volume Oil Total:** 27.75 mL
Forward Boards Crossed: 343 Boards **Reverse Boards Crossed:** 212 Boards **Total Boards Crossed:** 555 Boards

	Start	Stop	Loads	Speed	Crossed	Start	End	Feet	T.Oil
1	2L	2R	3	14	111	0.0	3.9	3.9	5550
2	9L	9R	2	14	46	3.9	7.8	3.9	2300
3	10L	10R	3	14	63	7.8	13.7	5.9	3150
4	11L	11R	3	18	57	13.7	21.3	7.6	2850
5	12L	12R	3	18	51	21.3	28.9	7.6	2550
6	13L	13R	1	18	15	28.9	31.4	2.5	750
7	2L	2R	0	22	0	31.4	37.0	5.6	0
8	2L	2R	0	26	0	37.0	42.0	5.0	0

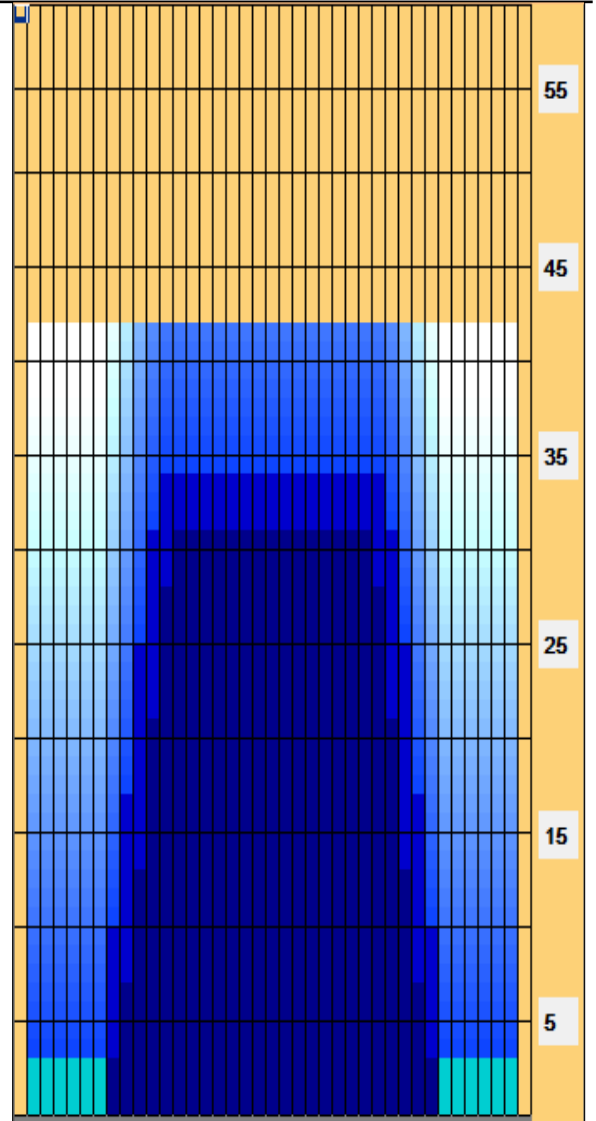
Conditioner:
 Type In or Select One
 TransferType:
 Type In or Select One

Forward

Reverse

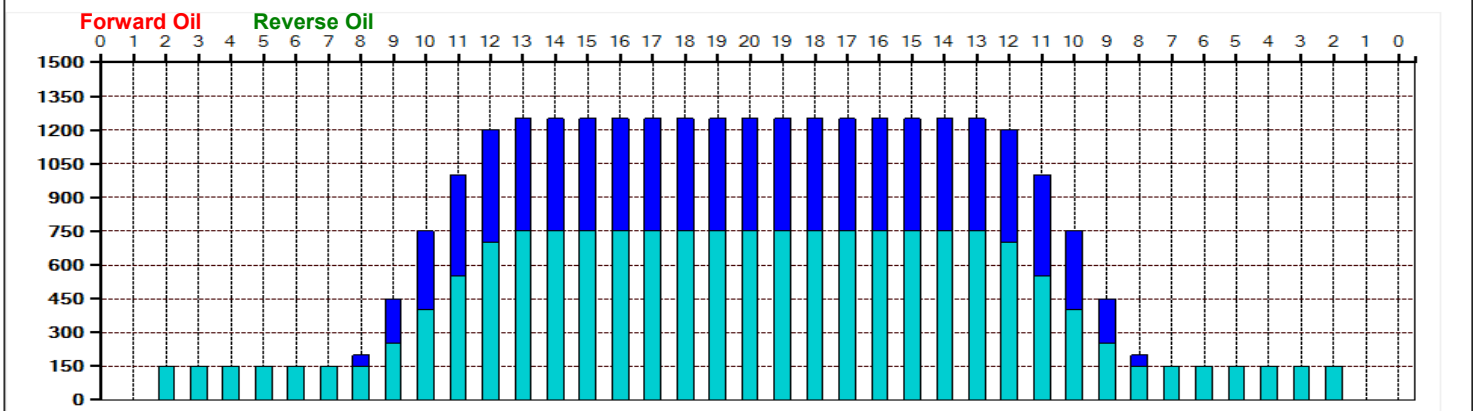
Combined

Buff



	Start	Stop	Loads	Speed	Crossed	Start	End	Feet	T.Oil
1	2L	2R	0	30	0	42.0	34.0	-8.0	0
2	12L	12R	1	22	17	34.0	30.9	-3.1	850
3	11L	11R	2	22	38	30.9	24.7	-6.2	1900
4	10L	10R	3	18	63	24.7	17.1	-7.6	3150
5	9L	9R	3	18	69	17.1	9.5	-7.6	3450
6	8L	8R	1	14	25	9.5	7.6	-1.9	1250
7	2L	2R	0	14	0	7.6	0.0	-7.6	0

Item	3L-7L:18L-18R	8L-12L:18L-18R	13L-17L:18L-18R	18L-18R:17R-13R	18L-18R:12R-8R	18L-18R:7R-3R
Description	Outside Track:Middle	Middle Track:Middle	Inside Track:Middle	Middle: Inside Track	Middle:Middle Track	Middle:Outside Track
Track Zone Ratio	8.33	1.74	1	1	1.74	8.33



R - Big Ben



Oil Pattern Distance: 44 Feet **Reverse Brush Drop:** 44 Feet **Oil Per Board:** 50 uL
Forward Oil Total: 17.15 mL **Reverse Oil Total:** 10.6 mL **Volume Oil Total:** 27.75 mL
Forward Boards Crossed: 343 Boards **Reverse Boards Crossed:** 212 Boards **Total Boards Crossed:** 555 Boards

	Start	Stop	Loads	Speed	Crossed	Start	End	Feet	T.Oil
1	2L	2R	3	14	111	0.0	3.9	3.9	5550
2	9L	9R	2	14	46	3.9	7.8	3.9	2300
3	10L	10R	3	18	63	7.8	15.4	7.6	3150
4	11L	11R	3	18	57	15.4	23.0	7.6	2850
5	12L	12R	3	18	51	23.0	30.6	7.6	2550
6	13L	13R	1	18	15	30.6	33.1	2.5	750
7	2L	2R	0	22	0	33.1	39.0	5.9	0
8	2L	2R	0	26	0	39.0	44.0	5.0	0

Conditioner:
Type In or Select One

TransferType:
Type In or Select One

Forward

Reverse

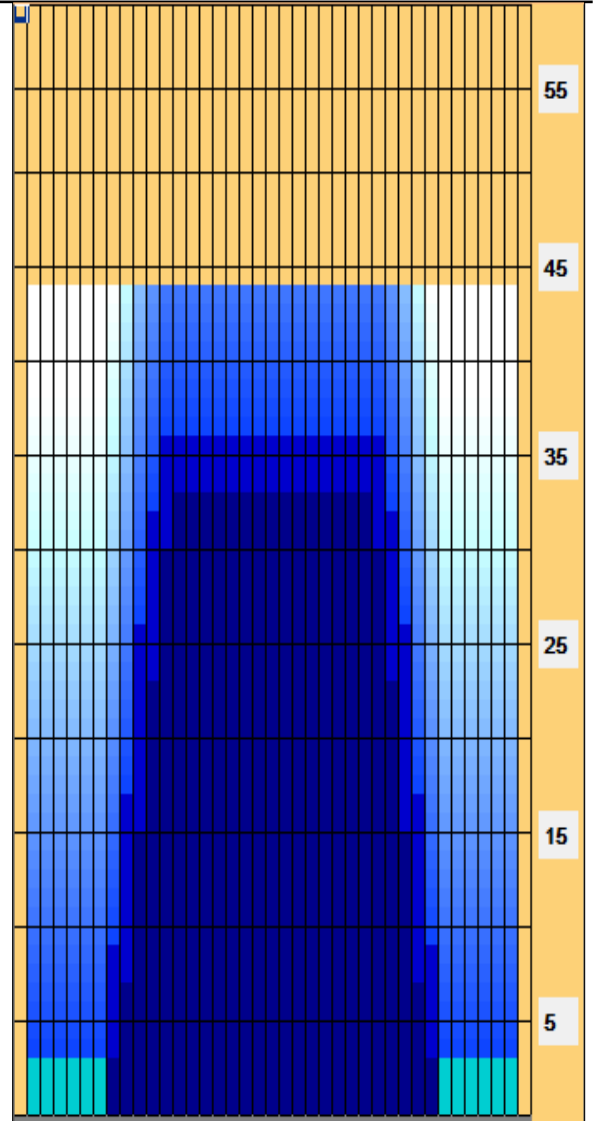
Combined

Buff

Navigation: Forward Reverse More

	Start	Stop	Loads	Speed	Crossed	Start	End	Feet	T.Oil
1	2L	2R	0	30	0	44.0	36.0	-8.0	0
2	12L	12R	1	26	17	36.0	32.4	-3.6	850
3	11L	11R	2	22	38	32.4	26.2	-6.2	1900
4	10L	10R	3	22	63	26.2	16.9	-9.3	3150
5	9L	9R	3	18	69	16.9	9.3	-7.6	3450
6	8L	8R	1	14	25	9.3	7.4	-1.9	1250
7	2L	2R	0	14	0	7.4	0.0	-7.4	0

Navigation: Forward Reverse More



Item	3L-7L:18L-18R	8L-12L:18L-18R	13L-17L:18L-18R	18L-18R:17R-13R	18L-18R:12R-8R	18L-18R:7R-3R
Description	Outside Track:Middle	Middle Track:Middle	Inside Track:Middle	Middle: Inside Track	Middle:Middle Track	Middle:Outside Track
Track Zone Ratio	8.33	1.74	1	1	1.74	8.33

