

2013 ICEBREAKER CLASSIC

Modified Kegel Easy Street

Leisure Lanes, Lancaster



Oil Pattern Distance:	39 Feet	Reverse Brush Drop:	36 Feet	Oil Per Board:	50 uL
Forward Oil Total:	9.1 mL	Reverse Oil Total:	11.45 mL	Volume Oil Total:	20.55 mL
Forward Boards Crossed:	182 Boards	Reverse Boards Crossed:	229 Boards	Total Boards Crossed:	411 Boards

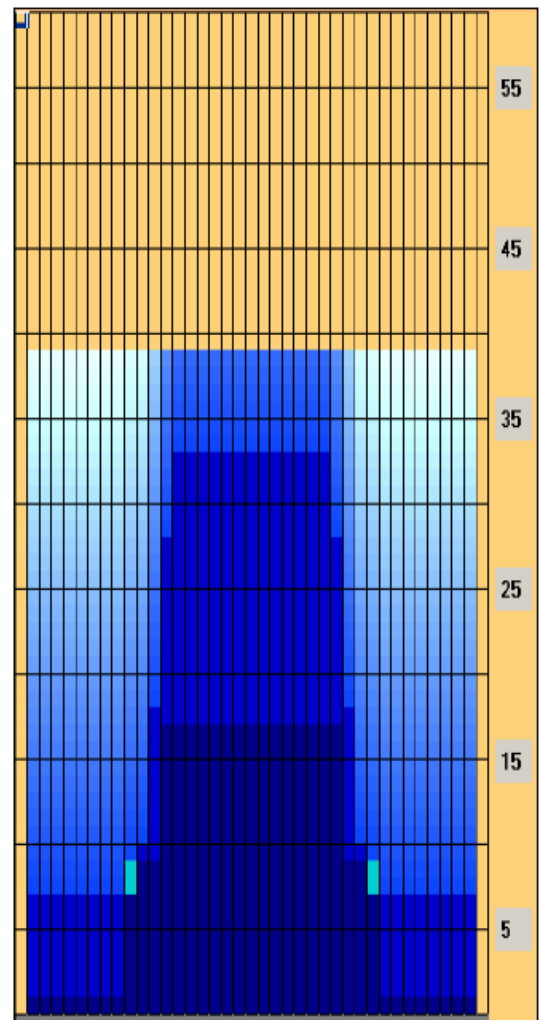
	Start	Stop	Loads	Speed	Crossed	Start	End	Feet	T.Oil
1	2L	2R	2	14	74	0	1.9	1.9	3700
2	10L	10R	3	18	63	1.9	9.5	7.6	3150
3	13L	13R	3	18	45	9.5	17.1	7.6	2250
4	2L	2R	0	18	0	17.1	24	6.9	0
5	2L	2R	0	22	0	24	33	9	0
6	2L	2R	0	30	0	33	39	6	0

	Start	Stop	Loads	Speed	Crossed	Start	End	Feet	T.Oil
1	2L	2R	0	30	0	39	33	-6	0
2	14L	14R	2	18	26	33	27.9	-5.1	1300
3	13L	13R	4	18	60	27.9	17.7	-10.2	3000
4	12L	12R	4	14	68	17.7	9.8	-7.9	3400
5	11L	11R	2	10	38	9.8	7	-2.8	1900
6	2L	2R	1	10	37	7	5.6	-1.4	1850
7	2L	2R	0	10	0	5.6	0	-5.6	0

Conditioner:
Varies

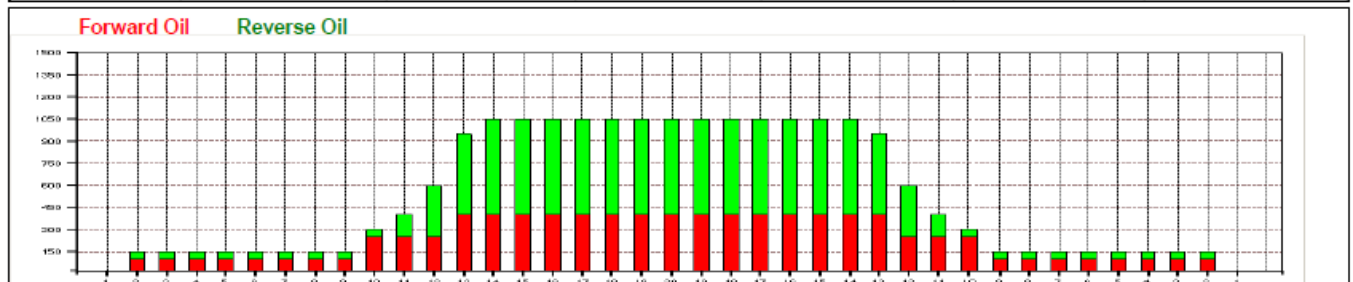
TransferType:
Transfer Brush

- Forward
- Reverse
- Combined
- Buff



This pattern was designed for a **TRANSFER BRUSH** machine. Please note that, even if you have the same machine, same oil, and same cleaner, it does NOT mean that this pattern will play the same in your home bowling center. Lane surface type and lane surface age play a huge role in how a pattern plays and can make a lane pattern play much different from bowling center to bowling center.

Item	3L-7L:18L-18R	8L-12L:18L-18R	13L-17L:18L-18R	18L-18R:17R-13R	18L-18R:12R-8R	18L-18R:7R-3R
Description	Outside Track:Middle	Middle Track:Middle	Inside Track:Middle	Middle: Inside Track	Middle:Middle Track	Middle:Outside Track
Track Zone Ratio	7	3.28	1.02	1.02	3.28	7



Kegel Recreation Easy Street



Oil Pattern Distance: 38 Feet **Reverse Brush Drop:** 38 Feet **Oil Per Board:** 50 uL
Forward Oil Total: 7.25 mL **Reverse Oil Total:** 11.45 mL **Volume Oil Total:** 18.7 mL
Forward Boards Crossed: 145 Boards **Reverse Boards Crossed:** 229 Boards **Total Boards Crossed:** 374 Boards

	Start	Stop	Loads	Speed	Crossed	Start	End	Feet	T.Oil
1	2L	2R	1	14	37	0.0	0.0	0.0	1850
2	10L	10R	3	18	63	0.0	7.6	7.6	3150
3	13L	13R	3	18	45	7.6	15.2	7.6	2250
4	2L	2R	0	18	0	15.2	24.0	8.8	0
5	2L	2R	0	22	0	24.0	33.0	9.0	0
6	2L	2R	0	30	0	33.0	38.0	5.0	0

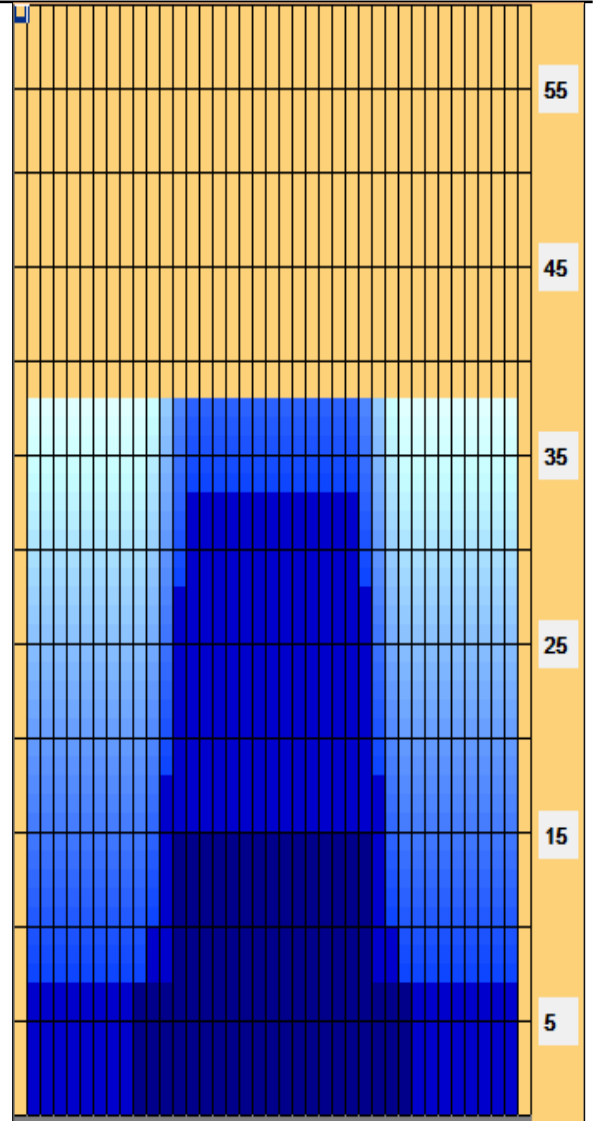
Conditioner:
 Type In or Select
 One
 TransferType:
 Type In or Select
 One

◀ ▶ ⏪ ⏩ Forward Reverse More

	Start	Stop	Loads	Speed	Crossed	Start	End	Feet	T.Oil
1	2L	2R	0	30	0	38.0	33.0	-5.0	0
2	14L	14R	2	18	26	33.0	27.9	-5.1	1300
3	13L	13R	4	18	60	27.9	17.7	-10.2	3000
4	12L	12R	4	14	68	17.7	9.8	-7.9	3400
5	11L	11R	2	10	38	9.8	7.0	-2.8	1900
6	2L	2R	1	10	37	7.0	5.6	-1.4	1850
7	2L	2R	0	10	0	5.6	0.0	-5.6	0

◀ ▶ ⏪ ⏩ Forward Reverse More

- Forward
- Reverse
- Combined
- Buff



EASY STREET - 7938 Because of the medium distance of this pattern, it is favorable to many different styles and ball choices. Bowlers with higher rev rates can easily swing the ball and bowlers with lower rev rates can play more direct. This pattern is just like walking down EASY STREET with no worries on a nice summer day.

Item	3L-7L:18L-18R	8L-12L:18L-18R	13L-17L:18L-18R	18L-18R:17R-13R	18L-18R:12R-8R	18L-18R:7R-3R
Description	Outside Track:Middle	Middle Track:Middle	Inside Track:Middle	Middle: Inside Track	Middle:Middle Track	Middle:Outside Track
Track Zone Ratio	10	3.7	1.02	1.02	3.7	10

