

Team Option #1 – Modified Stonehenge

50 uL Transfer Brush



Oil Pattern Distance:	40 Feet	Reverse Brush	36 Feet	Oil Per	50 uL
Forward Oil Total:	15.95 mL	Reverse Oil	7.8 mL	Volume Oil Total:	23.75 mL
Forward Boards Crossed:	319 Boards	Reverse Boards Crossed:	156 Boards	Total Boards Crossed:	475 Boards

	Start	Stop	Loads	Speed	Crossed	Start	End	Feet	T.Oil
1	2L	2R	3	18	111	0.0	5.1	5.1	5550
2	7L	7R	1	18	27	5.1	7.6	2.5	1350
3	9L	9R	2	18	46	7.6	12.7	5.1	2300
4	10L	10R	3	18	63	12.7	20.3	7.6	3150
5	11L	11R	2	18	38	20.3	25.4	5.1	1900
6	12L	12R	2	18	34	25.4	30.5	5.1	1700
7	2L	2R	0	22	0	30.5	36.0	5.5	0
8	2L	2R	0	30	0	36.0	40.0	4.0	0

Forward Reverse More

	Start	Stop	Loads	Speed	Crossed	Start	End	Feet	T.Oil
1	2L	2R	0	30	0	40.0	28.0	-12.0	0
2	12L	12R	2	18	34	28.0	22.9	-5.1	1700
3	11L	11R	2	18	38	22.9	17.8	-5.1	1900
4	10L	10R	4	18	84	17.8	7.6	-10.2	4200
5	2L	2R	0	14	0	7.6	0.0	-7.6	0

Forward Reverse More

Conditioner:
Type In or Select
One

TransferType:
Type In or Select
One

Forward



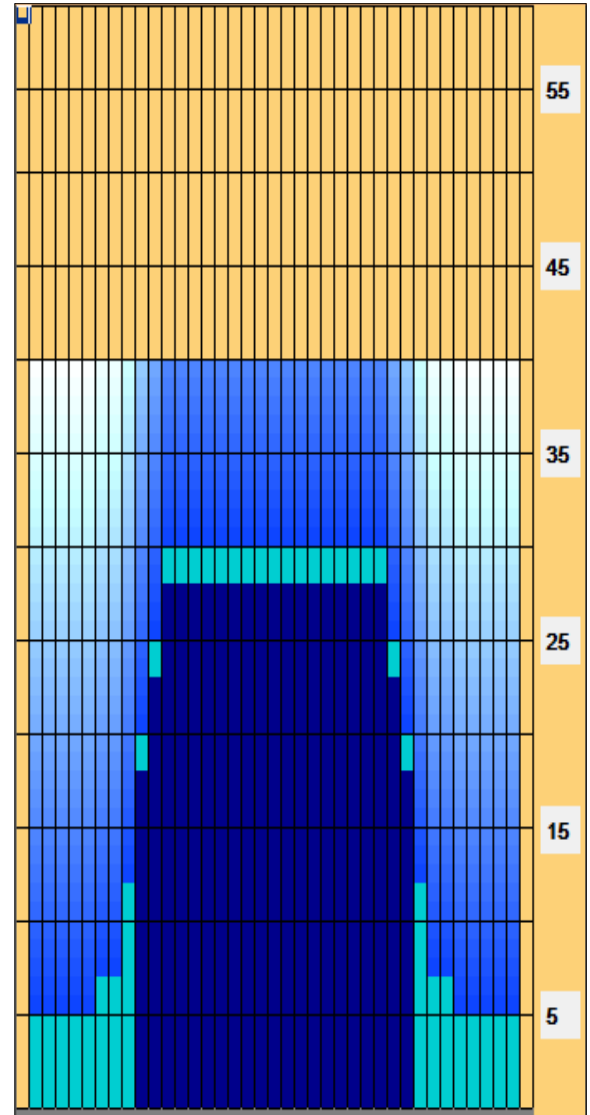
Reverse



Combined

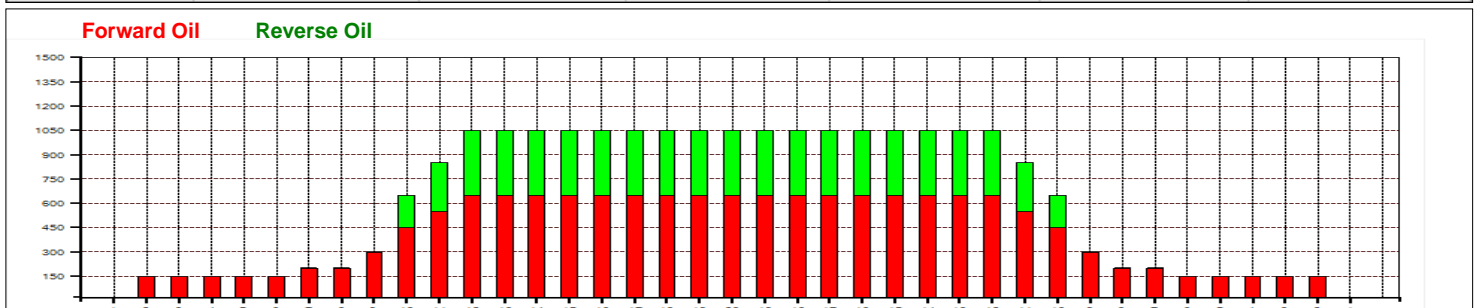


Buff



Kegel Landmark Stonehenge

Item	3L-7L:18L-18R	8L-12L:18L-18R	13L-17L:18L-18R	18L-18R:17R-13R	18L-18R:12R-8R	18L-18R:7R-3R
Description	Outside Track:Middle	Middle Track:Middle	Inside Track:Middle	Middle:Inside Track	Middle:Middle Track	Middle:Outside Track
Track Zone Ratio	6.56	1.72	1	1	1.72	6.56



Team Option #2 – Modified Wall Street

50 uL Transfer Brush



Oil Pattern Distance:	39 Feet	Reverse Brush	36 Feet	Oil Per	50 uL
Forward Oil Total:	10.65 mL	Reverse Oil	10.9 mL	Volume Oil Total:	21.55 mL
Forward Boards Crossed:	213 Boards	Reverse Boards Crossed:	218 Boards	Total Boards Crossed:	431 Boards

	Start	Stop	Loads	Speed	Crossed	Start	End	Feet	T.Oil
1	2L	2R	2	18	74	0.0	2.5	2.5	3700
2	10L	10R	3	18	63	2.5	10.1	7.6	3150
3	10L	10R	2	18	42	10.1	15.2	5.1	2100
4	12L	12R	2	18	34	15.2	20.3	5.1	1700
5	2L	2R	0	18	0	20.3	24.0	3.7	0
6	2L	2R	0	22	0	24.0	32.0	8.0	0
7	2L	2R	0	30	0	32.0	39.0	7.0	0

Forward Reverse More

	Start	Stop	Loads	Speed	Crossed	Start	End	Feet	T.Oil
1	2L	2R	0	30	0	39.0	33.0	-6.0	0
2	11L	11R	4	22	76	33.0	20.6	-12.4	3800
3	10L	10R	5	18	105	20.6	7.9	-12.7	5250
4	2L	2R	1	14	37	7.9	6.0	-1.9	1850
5	2L	2R	0	14	0	6.0	0.0	-6.0	0

Forward Reverse More

Conditioner:
Type In or Select
One

TransferType:
Type In or Select
One

Forward



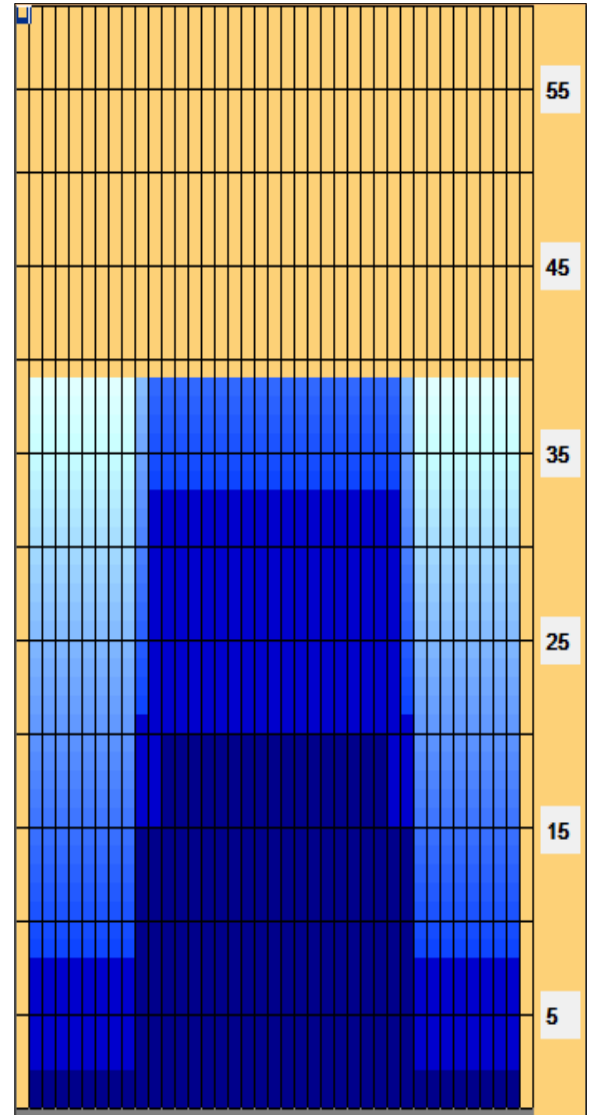
Reverse



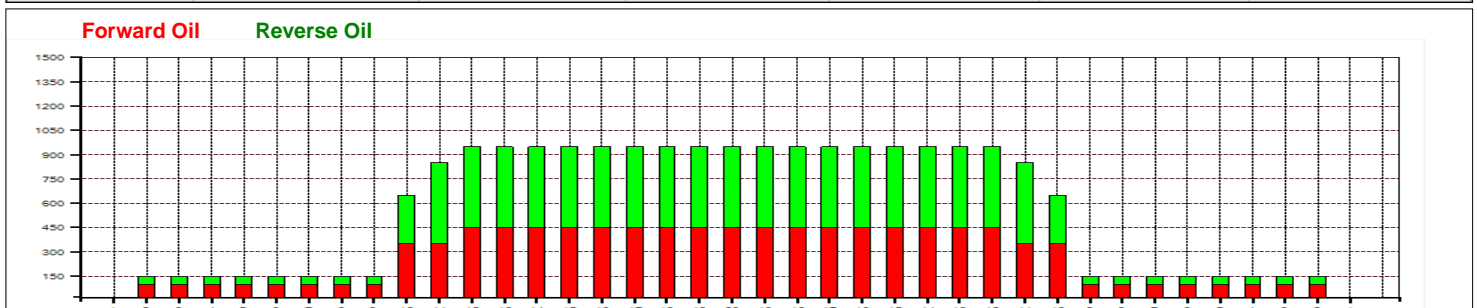
Combined



Buff



Item	3L-7L:18L-18R	8L-12L:18L-18R	13L-17L:18L-18R	18L-18R:17R-13R	18L-18R:12R-8R	18L-18R:7R-3R
Description	Outside Track:Middle	Middle Track:Middle	Inside Track:Middle	Middle:Inside Track	Middle:Middle Track	Middle:Outside Track
Track Zone Ratio	6.33	1.73	1	1	1.73	6.33



Team Option #3 – Modified White 1

50 uL Transfer Brush



Oil Pattern Distance:	40 Feet	Reverse Brush	38 Feet	Oil Per	50 uL
Forward Oil Total:	11.9 mL	Reverse Oil	8.95 mL	Volume Oil Total:	20.85 mL
Forward Boards Crossed:	238 Boards	Reverse Boards Crossed:	179 Boards	Total Boards Crossed:	417 Boards

	Start	Stop	Loads	Speed	Crossed	Start	End	Feet	T.Oil
1	2L	2R	3	18	111	0.0	5.1	5.1	5550
2	10L	10R	3	18	63	5.1	12.7	7.6	3150
3	12L	12R	2	18	34	12.7	17.8	5.1	1700
4	13L	13R	2	18	30	17.8	22.9	5.1	1500
5	2L	2R	0	18	0	22.9	24.0	1.1	0
6	2L	2R	0	22	0	24.0	33.0	9.0	0
7	2L	2R	0	30	0	33.0	40.0	7.0	0

Conditioner:
Type In or Select
One

TransferType:
Type In or Select
One

Forward



Reverse



Combined

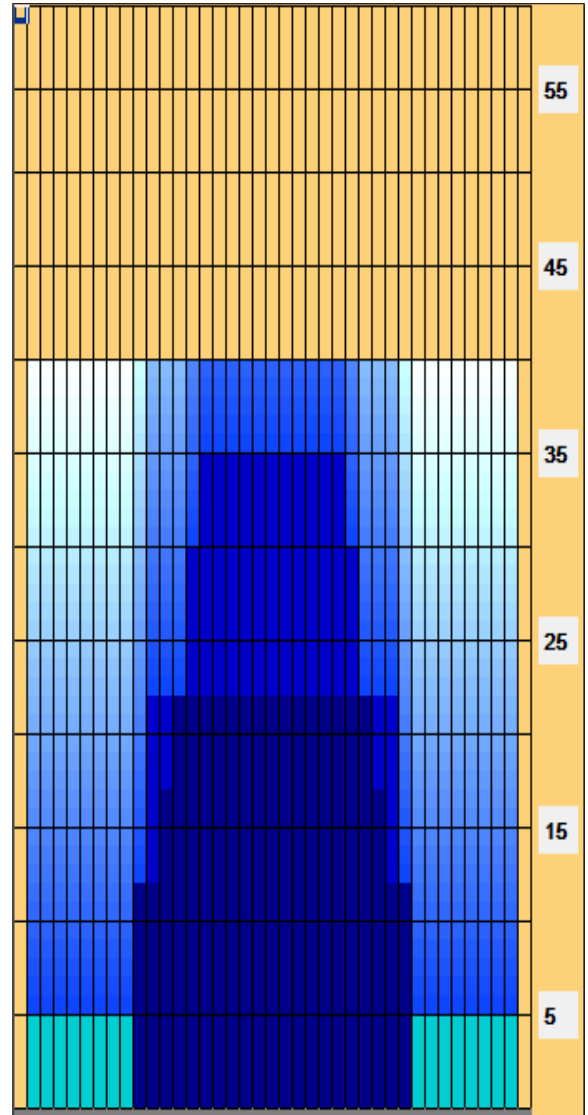


Buff

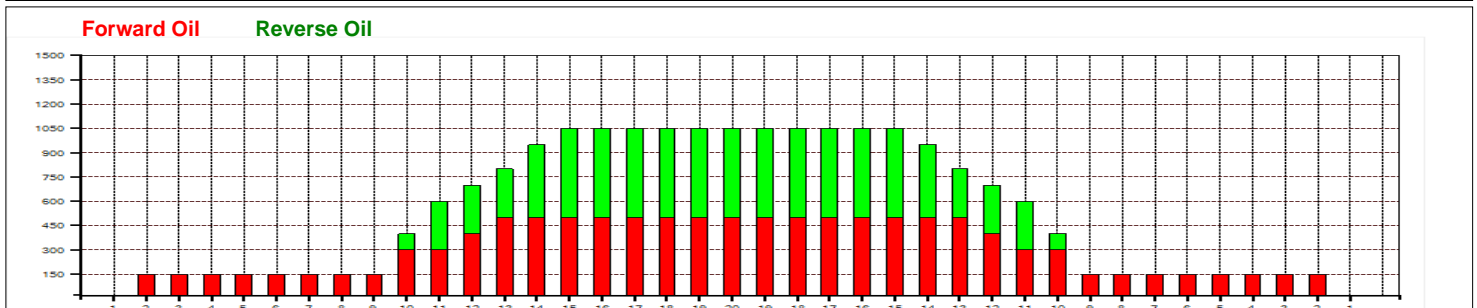


	Start	Stop	Loads	Speed	Crossed	Start	End	Feet	T.Oil
1	2L	2R	0	22	0	40.0	35.0	-5.0	0
2	15L	15R	2	18	22	35.0	29.9	-5.1	1100
3	14L	14R	3	18	39	29.9	22.3	-7.6	1950
4	11L	11R	4	18	76	22.3	12.1	-10.2	3800
5	10L	10R	2	10	42	12.1	9.3	-2.8	2100
6	2L	2R	0	10	0	9.3	0.0	-9.3	0

Forward	Reverse	More
---------	---------	------



Item	3L-7L:18L-18R	8L-12L:18L-18R	13L-17L:18L-18R	18L-18R:17R-13R	18L-18R:12R-8R	18L-18R:7R-3R
Description	Outside Track:Middle	Middle Track:Middle	Inside Track:Middle	Middle:Inside Track	Middle:Middle Track	Middle:Outside Track
Track Zone Ratio	7	2.63	1.07	1.07	2.63	7



Team Option #4 – Modified Easy Street

50 uL Transfer Brush



Oil Pattern Distance:	39 Feet	Reverse Brush	35 Feet	Oil Per	50 uL
Forward Oil Total:	9.1 mL	Reverse Oil	12.8 mL	Volume Oil Total:	21.9 mL
Forward Boards Crossed:	182 Boards	Reverse Boards Crossed:	256 Boards	Total Boards Crossed:	438 Boards

	Start	Stop	Loads	Speed	Crossed	Start	End	Feet	T.Oil
1	2L	2R	2	14	74	0.0	1.9	1.9	3700
2	10L	10R	3	18	63	1.9	9.5	7.6	3150
3	13L	13R	3	18	45	9.5	17.1	7.6	2250
4	2L	2R	0	18	0	17.1	24.0	6.9	0
5	2L	2R	0	22	0	24.0	33.0	9.0	0
6	2L	2R	0	30	0	33.0	39.0	6.0	0

Forward Reverse More

	Start	Stop	Loads	Speed	Crossed	Start	End	Feet	T.Oil
1	2L	2R	0	30	0	39.0	33.0	-6.0	0
2	14L	14R	2	18	26	33.0	27.9	-5.1	1300
3	13L	13R	4	18	60	27.9	17.7	-10.2	3000
4	12L	12R	4	14	68	17.7	9.8	-7.9	3400
5	11L	11R	2	10	38	9.8	7.0	-2.8	1900
6	7L	7R	1	10	27	7.0	5.6	-1.4	1350
7	2L	2R	1	10	37	5.6	4.2	-1.4	1850
8	2L	2R	0	10	0	4.2	0.0	-4.2	0

Forward Reverse More

Conditioner:
Type In or Select
One

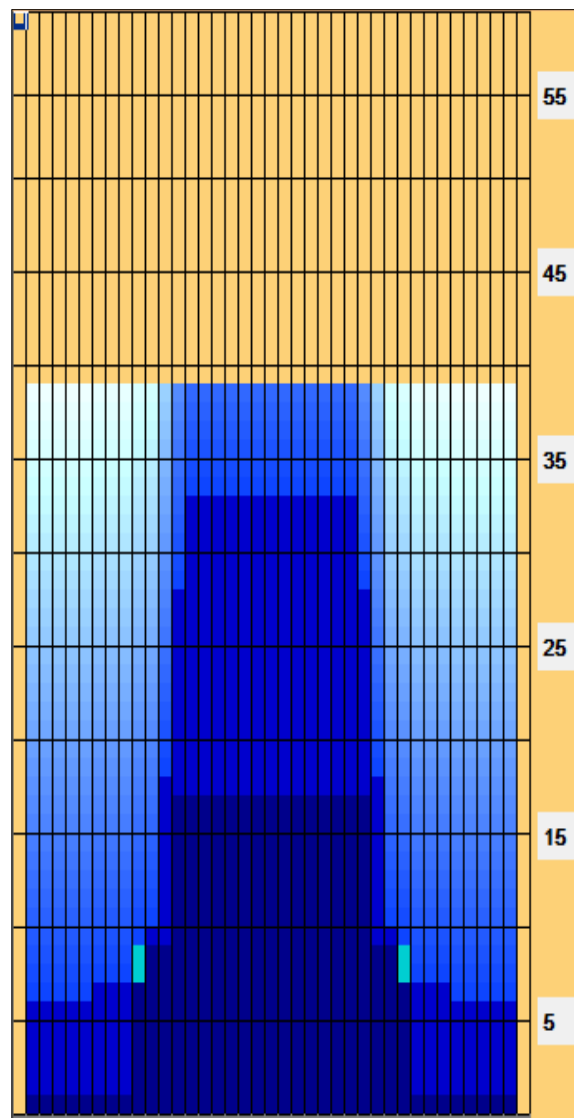
TransferType:
Type In or Select
One

Forward

Reverse

Combined

Buff



EASY STREET - 7938 Because of the medium distance of this pattern, it is favorable to many different styles and ball choices. Bowlers with higher rev rates can easily swing the ball and bowlers with lower rev rates can play more direct. This pattern is just like walking down EASY STREET with no worries on a nice summer day.

Item	3L-7L:18L-18R	8L-12L:18L-18R	13L-17L:18L-18R	18L-18R:17R-13R	18L-18R:12R-8R	18L-18R:7R-3R
Description	Outside Track:Middle	Middle Track:Middle	Inside Track:Middle	Middle:Inside Track	Middle:Middle Track	Middle:Outside Track
Track Zone Ratio	6.88	2.97	1.02	1.02	2.97	6.88

